



GAME CHANGE AGENCY

# BECOME A GCA PREMIUM PARTNER.

**GCA helps executives  
move faster smarter.  
When leaders connect  
new ideas are born  
solutions emerge.  
The world changes!**



**GCA is an online  
networking &  
matching platform  
for the world's  
most influential  
decision makers.**

GCA offers compelling terms: simple, short, friendly and economical pricing

To learn more about becoming a premium partner  
use [this link](#) to schedule an exploratory call.



GAME CHANGE AGENCY

# HOME TO GAME CHANGERS

## For PREMIUM PARTNERS



### INTRODUCING GAME CHANGE AGENCY

GCA is an exclusive network comprised of preeminent decision makers, influencers and thought leaders. Our members are the C-suite executives, board members and advisors to the most successful organizations in the world. Membership is by invitation, with new members nominated by current members. \*we encourage you to visit our public [website](#)

GCA members are recognized as Game Changers by industry experts and come from the private and public sectors across all industries and functional areas worldwide. Their respective organizations come from the Global 2000, Fortune 1000, midsize and small companies, Private Equity/VC firms across all industries and the Not for Profit and Public Sectors.

**GCA's Premium Partnership Program**, designed for companies and universities, enables partners to develop synergies with GCA members and their respective organizations at the governance levels worldwide. Organizations and universities advance a wide range of strategic initiatives by participating in the following Partner Programs:



## PARTNER PROGRAMS

### Connect With Decision Makers

GCA bridges the best of the high-touch traditions you have come to expect from the old-world with the connectivity and reach you gain from social networks of the new era.

## GCA EMPLOYEE ALUMNI RELATIONS

The ability to enhance and nurture your most influential current and former employee/alumni relationships is critical. GCA offers individuals an immersive and holistic experience designed to engender career management, brand enhancement and purposeful networking. You can learn more about the benefits of membership for your most distinguished talent by visiting the “About” page on our website, [click here](#).

## GCA TALENT ACQUISITION & SUCCESSION PLANNING

The power of the GCA network emanates from the broad cross-section of key decision makers and influencers from all industries and functional areas worldwide. Organizations, large and small, use GCA to fill their most senior-level human capital needs and is ideal for succession planning. Talent acquisition includes Board Directorships, Advisory Board Members, Full Time & Interim Employees, SME’s, Consultants, Guest Speakers, Authors/Writers and more.

## GCA b2b

GCA’s b2b program is ideal for lead generation and securing new business opportunities. It enables Premium Partners to develop synergies with GCA members and their respective organizations at the governance levels worldwide.

## GCA VENTURES

At our core, GCA is a network of highly accomplished individuals. GCA members are interested in identifying investment opportunities (for their individual portfolios or on behalf of their investment institutions). Also, the GCA network is comprised of individuals with extended track records of success seeking to raise capital for their startup, venture fund or organization. Therefore, GCA Ventures functions as a two-way system. Partners and members explore and fund investment opportunities while others raise capital, helping drive advancement and innovation.



## GCA STUDIOS

GCA Studios is like TED Talks but with continuity centered around each individual Host. GCA members and Premium Partners become Hosts on GCA Studios. Each Host has their own public, web-based tv show/podcast featuring topics, issues, products, services impacting their business, clients, strategic initiatives and more. Hosts invite GCA members, their respective companies and other parties in their network to appear as guest speakers or domain experts. Therefore, GCA Studios functions as a two-way system. Partners and members host their own show while others appear as guest speakers. This brings together prominent decision makers, influencers and thought leaders to discuss game changing topics and initiatives.

## GCA EVENTS

Through GCA Events, Premium Partners host in-person networking events to foster business relationships, share best practices and elevate professional growth. They are an excellent way to develop synergies with GCA members and their respective organizations at the governance levels and is ideal for lead generation and business development. GCA Events function as a two-way system. Partners and members host in-person networking events while others attend as their guests. Venues range from small intimate lunch/dinner parties at restaurants or private homes to larger conference-like settings to in-person filmed events with a live audience.

## GCA GANDALF

The best way to understand the road ahead is to ask the traveler on their way back! GCA Gandalf is a way for partners and members to share their wisdom, guidance and deep domain expertise. Think of the GCA Gandalf program as a thought leadership exchange: a two-way system ideal for cross pollinating thought leadership and domain expertise between your company's leaders and the GCA ecosystem.

## GCA PUBLIC RELATIONS

A benefit to Premium Partners includes public relations to enhance and manage your company's brand. We offer "Spotlights", "Announcements" and "Bio Videos". Spotlights shine the light on your company's background and strategic initiatives. Announcements showcase new product launches, service offerings, notable partnerships or accomplishments and more. Bio Videos are short, 3-6 minutes in length, and provide a high-level takeaway of your company, your leaders and their important leadership initiatives.



Each are professionally curated to showcase partners in the best light possible. Premium Partners obtain innumerable benefits from sharing these PR elements through their social media outlets such as LinkedIn, Facebook, Twitter accounts, company website, and most importantly, throughout the extended GCA ecosystem of decision makers and influencers.

GCA  
TAP

**It's All About 1° of Separation vs. 6°** - Only Premium Partners and members gain access to TAP, GCA's highly curated online networking platform that provides limitless opportunities to network purposefully at the governance levels worldwide. All partner programs come to life inside TAP (we like to say, "The More You TAP, the More Things Happen!").

## GCA's ONLINE NETWORKING & MATCHING PLATFORM

A highly efficient business model connecting and matching the interests between all users of the GCA ecosystem



# PREMIUM PARTNER PRICING

**Annual Subscription** - GCA offers Premium Partners an annual subscription model. Partners may participate in individual programs (a la carte) or to unlock the full power of the GCA network we offer a bundled package with favorable pricing terms. See table below. Upon request, we will provide our pricing table for your review.

COMPANIES			
GCA PROGRAM	Standard Price	Promotion Price	Bundled Price
GCA Alumni Relations	\$ 15,000	\$ 11,250	Included
GCA Talent Acquisition & Succession Planning	\$ 25,000	\$ 18,750	Included
GCA b2b	\$ 25,000	\$ 18,750	Included
GCA Ventures	\$ 15,000	\$ 11,250	Included
GCA Studios	\$ 25,000	\$ 18,750	Included
GCA Events	\$ 25,000	\$ 18,750	Included
GCA Gandalf	\$ 25,000	\$ 18,750	Included
GCA Public Relations	\$ 15,000	\$ 11,250	Included
GCA TAP (\$2,000/user license) x 10	\$ 20,000	\$ 15,000	Included
<b>TOTAL PRICE</b>	<b>\$ 140,000</b>	<b>\$ 109,000</b>	<b>\$ 140,000</b>

CHANGING  
THE WORLD  
TOGETHER

**GCA helps executives move faster and smarter. When leaders connect, new ideas are born, solutions emerge and the world changes!**



## NEXT STEPS & TIME COMMITMENT

1. To learn more about becoming a premium partner use this [link](#) to schedule an exploratory call.
2. Compelling terms, conditions and economical pricing that are simple, short and friendly.
3. Activate your organization as a Premium Partner and provide login access to all requested users.
4. Start engaging with the GCA community...

...in order to maximize the benefits of your GCA experience, our specialists are always available for follow-up phone calls and face to face meetings.

We look forward to developing a strong and enduring relationship. GCA bridges the best of the high-touch traditions you have come to expect from the old-world with the connectivity and reach you gain from social networks of the new digital era.

## MEMBERSHIP CRITERIA

**Membership is by invitation, with new members nominated by current members.**

**All GCA members carry a certain reputation with them** and are some of the most sought-after individuals in the world. They have unique accomplishments making the total GCA network an important force for global positive change.

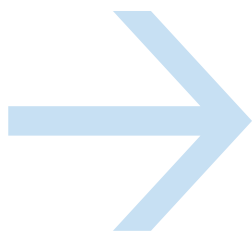
**All GCA members are outstanding individuals** who possess the expertise needed to drive business model transformation and innovation. Companies and institutions look for GCA Game Changers as board directors, board advisors, SME's, potential employees, consultants and more.

**All GCA members have achieved mastery** in their respective fields and typically have reached the Vice President level or above (or a corresponding level of seniority in the public sector. They are decision makers, they are influencers, they are recognized as Game Changers.

**The GCA network is a microcosm** of the global economy. Members come from the private and public sectors across all industries and functional areas. Membership is composed of senior-level executives, professionals and entrepreneurs, government and military officials, leaders of universities, thought leaders and influencers.

**GCA members are nominated to and accepted** by the GCA Admissions Office without regard to gender, race, religion or age.

**CHANGE THE GAME WITH GCA!**



**JOIN US.**



# SAMPLE GCA MEMBERS



**David Johnson**  
Senior Managing Director  
**Blackstone**  
*Former Head of Corporate Development, IBM. Recognized by industry insiders as a king of corporate M&A: acquired +130 companies*



**Alexandra Wright-Gladstein**  
CEO  
**Ayar Labs**  
*Silicon photonics startup is changing the game in the semiconductor industry*



**Ed Sim**  
Founding Partner  
**Boldstart Ventures**  
*Serially successful VC early stage Companies. Go to market advisor*



**Nick Donofrio**  
EVP, former  
**IBM**  
*IBM Fellow Emeritus, Innovation And technology Advisor, GCA Host*



**Colin Parris**  
VP, GE Software Research  
*Currently Colin is a corporate officer of GE. He has responsibility for worldwide SW and is one of the key drivers of GE's digital pivot into the Industrial Internet of Things.*



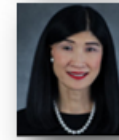
**Filippo Passerini**  
CIO, former  
**Procter & Gamble Co.**  
*Globally recognized information technology and shared services thought leader*



**Tom Hill**  
Four Star General  
**United States Army**  
*Highly decorated combat soldier/diplomat, and widely respected leader*



**John Hinshaw**  
Former EVP  
**Hewlett Packard Enterprise**  
*A rising force in the world of global technology. General Manager / Technologist / Board Director*



**Moni Miyashita**  
Partner  
**Innosight**  
*Former IBM senior Corporate Development executive and Senior Advisor, M&A Practice, Motrinsey & Company.*



**Ginny Clark**  
Managing Director  
**Beech Hill Securities**  
*One of the original female Wall Street game changers. First Female Wall St. trader during 60s*



**Marie Wiecek**  
General Manager  
**Blockchain, IBM**  
*A veteran IBM SW leader, a hands on senior executive with worldwide P&L, experience in hardware, software and services delivery leading teams of up to 10,000 with \$9 billion in revenue*



**Michael Jackman**  
CEO  
**Mach7 Technologies**  
*Former CEO Americas Healthcare Digital, GE. General Manager - International experience in the Health Care and Information Technology Industry*



**Phil Guido**  
General Manager  
**Global Technology Services IBM**  
*Senior business executive with more than 25 years experience in all facets of executive business*



**Frank Johnson**  
General Manager  
VP, Sales  
**Intel Corporation**  
*Visionary leader that quickly grasps near term initiatives and opportunities while foreseeing long term opportunities*



**Mike Monahan**  
CFO  
**Pitney Bowes Inc.**  
*A proven executive that has led all aspects of general and financial management at a Fortune 500*



**Alberto Arciniega**  
VP, WW Industry & Global Accounts  
**Microsoft Corporation**  
*Seasoned Sales leader with successful Track record of success at IBM and Microsoft*



**Nicholas Bertram**  
Senior Vice President  
**Ahold USA**  
*Rising star in the consumer food retail industry. Meteoric success at Walmart And Ahold USA*



**Jim Routh**  
Chief Security Officer  
**aetna**  
*Globally recognized Information Security leader*



**Richard Dutton**  
Head of Data Analytics & Cloud Applications  
**Millennium Management**  
*Rising star in the field of Data Science*



**Brent Baker**  
Retired, Major General  
**United States Air Force**  
*High performing senior logistics professional who has built, merged, and led organizations with up to 84K workforce, \$80B in budgets across 200 locations*



**Peter Stern**  
VP, Cloud Services  
**Apple Inc.**  
*Dynamic technology, media & telecommunications executive. Former EVP, Time Warner Cable*



**Eric Kuisch**  
Chief Technology Officer  
**Vodafone Germany**  
*One of Europe's foremost CTOs. Responsible for driving and implementing Vodafone's technology Strategy initiatives*



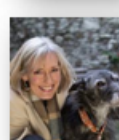
**Jeff Parkinson**  
Managing Partner  
**KEC Ventures**  
*One of the leading New York VCs specialized in early stage investing*



**Al Zollar**  
Executive Partner  
**Siris Capital Group**  
*Former General Manager, IBM Tivoli Software, he held leadership roles for all units within IBM's Software Group division and was a Senior Operating Executive of IBM Corporation*



**Rob Ramrath**  
Former, CIO  
**Bose Corporation**  
*Expertise: Digital eCommerce and Change Management; business acumen and technology advisor*



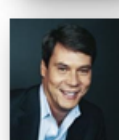
**Kathy Sorley**  
Director, Thinker In Residence  
**Royal Zoological Society of Scotland**  
*Media executive, creativity and innovation, client and board Relationship management, GCA Studios Host*



**Ilieva Ageenko**  
Managing Director  
**Grant Thornton**  
*Broad gauged experience in commerce & consumerization of emerging technologies - invaluable for guiding GCA's big data and analytics strategies.*



**Nicole Anasenes**  
CFO  
**Square Space**  
*Former CFO INFOR, senior Finance Corp Dev executive, IBM. Business acumen Corporate development advisor*



**Doug Schmidt**  
CIO  
**Dentsu Aegis Network**  
*Big Data and Analytics Successful CIO and technologist of Startups and Large Enterprises*



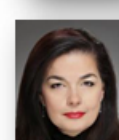
**Lonne Jaffe**  
Former CEO  
**Syncsort**  
*Key advisor regarding digital driven growth strategies and new business models.*



**Joao Perez**  
SVP, Global Sales  
**NCR Corporation**  
*Sales leadership acumen and Go to market strategies*



**Caglayan Arkan**  
General Manager  
**Microsoft Corporation**  
*Sales leadership acumen And go to market strategies*



**Ana Dutra**  
CEO  
**The Executive Club of Chicago**  
*International profile includes Former roles: CEO, General Manager, Partner Korn Ferry, Accenture, Mercer, CSC Index*

# MEMBERSHIP KEY DEMOGRAPHICS

GCA REPRESENTS INDIVIDUALS IN NORTH AMERICA, EMEA,  
AND REST OF WORLD, PRIMARILY ASIAPAC AND THE BRICS.

## THE PRIVATE SECTOR

GCA has organized the private sector into 35 industry verticals encompassing more than 160 industry sub-segments. In the future GCA will add industry verticals to accurately reflect the rapidly evolving global marketplace.

## THE PUBLIC SECTOR

GCA has organized the Public Sector (not for profit) into five broad categories (see graphic below). GCA represents individuals from the public sector that have attained the following levels of seniority: Senior Executive Service, Elected Leaders and Appointed Senior Leaders, General-Colonel, and Key Employees.



**FEDERAL / STATE / LOCAL GOVERNMENTS**

**MILITARY SERVICE**

**HIGHER EDUCATION STATE AND FEDERAL**

**FOUNDATIONS, PRIVATE / COMMUNITY**

**ASSOCIATIONS**

The GCA Network is a Microcosm  
of the global marketplace



# KEY DEMOGRAPHICS

THE FOLLOWING TABLES ILLUSTRATE THE CURRENT AND PROJECTED DEPTH AND BREADTH OF GCA'S TALENT POOL BY: REGIONS OF THE WORLD, PRIVATE & PUBLIC SECTOR, AND ACTIVE VS RETIRED

CURRENT STATE 2017	
REGION	Executive Members
APAC	2%
EMEA	8%
LATIN AMERICA	1%
NORTH AMERICA	89%

FUTURE STATE 2020	
REGION	Executive Members
APAC	17%
EMEA	33%
BRIC	17%
NORTH AMERICA	33%

FUTURE STATE 2020	
REGION	Executive Members
APAC	25,000
EMEA	50,000
BRIC	25,000
NORTH AMERICA	50,000

NORTH AMERICA CURRENT STATE 2017	
PRIVATE AND PUBLIC SECTOR	Executive Members
PRIVATE SECTOR	97%
PUBLIC SECTOR	3%

NORTH AMERICA FUTURE STATE 2020	
PRIVATE AND PUBLIC SECTOR	Executive Members
PRIVATE SECTOR	75%
PUBLIC SECTOR	25%

FUTURE STATE 2020	
PRIVATE AND PUBLIC SECTOR	Executive Members
PRIVATE SECTOR	37,500
PUBLIC SECTOR	12,500

NORTH AMERICA CURRENT STATE 2017	
ACTIVE vs RETIRED	Executive Members
ACTIVE	93%
RETIRED	7%

NORTH AMERICA FUTURE STATE 2020	
ACTIVE vs RETIRED	Executive Members
ACTIVE	80%
RETIRED	20%

FUTURE STATE 2020	
ACTIVE vs RETIRED	Executive Members
ACTIVE	40,000
RETIRED	10,000



# DIVERSITY INCLUSION

THE FOLLOWING TABLES ILLUSTRATE THE CURRENT 2017 AND PROJECTED 2020 DIVERSITY BY RACE AND GENDER FOR NORTH AMERICA

NORTH AMERICA CURRENT STATE 2017	
RACE DIVERSITY	Executive Members
AFRICAN AMERICAN	3%
HISPANIC	9%
INDIA	9%
ASIAN	2%
<b>TOTAL</b>	<b>23%</b>

NORTH AMERICA CURRENT STATE 2017	
GENDER DIVERSITY	Executive Members
FEMALE	27%
MALE	73%

NORTH AMERICA FUTURE STATE 2020	
RACE DIVERSITY	Executive Members
AFRICAN AMERICAN	7%
HISPANIC	7%
INDIA	7%
ASIAN	4%
<b>TOTAL</b>	<b>25%</b>

NORTH AMERICA FUTURE STATE 2020	
GENDER DIVERSITY	Executive Members
FEMALE	30%
MALE	70%

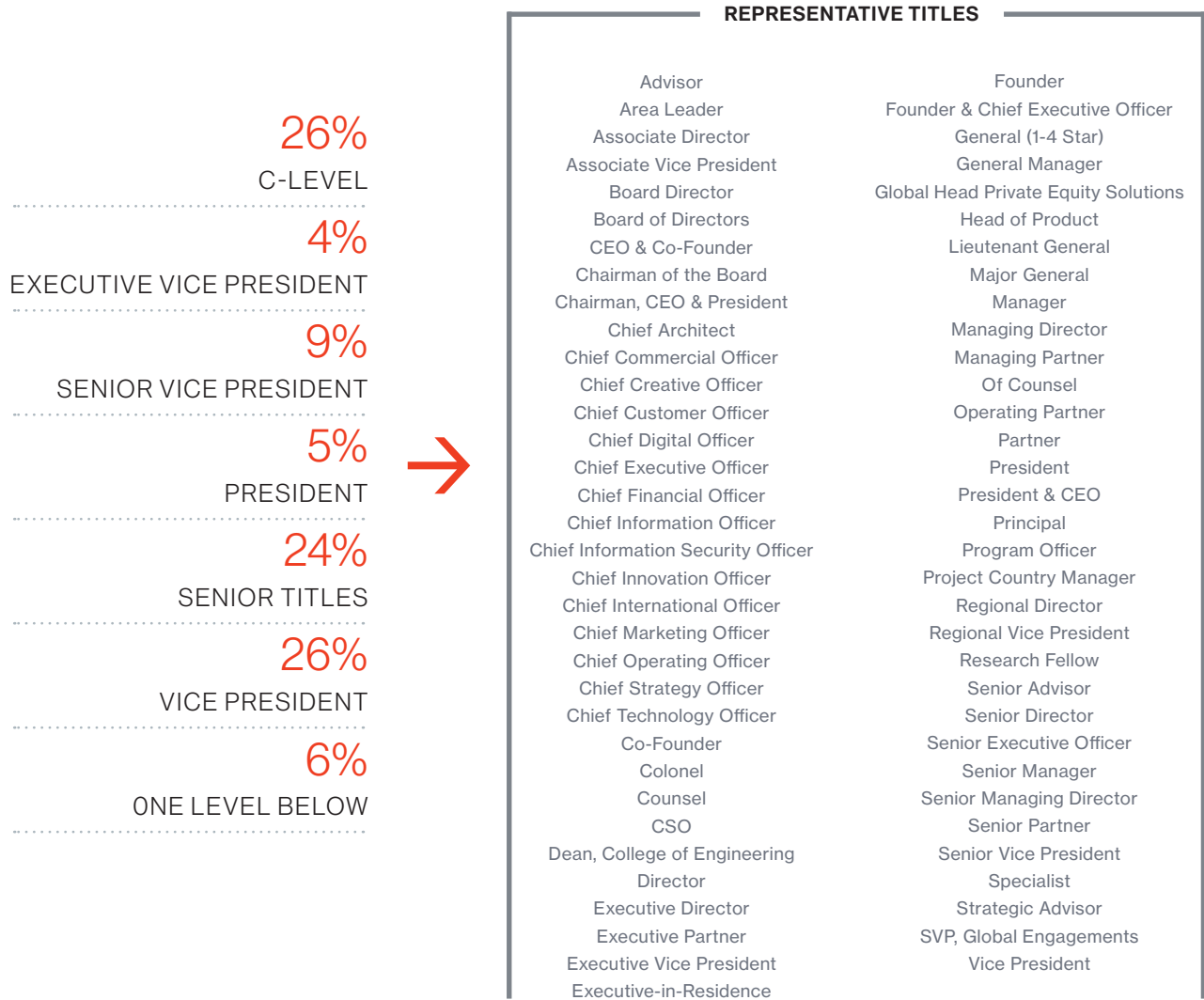
FUTURE STATE 2020 Total Numbers	
GENDER DIVERSITY	Executive Members
FEMALE	15,000
MALE	35,000

FUTURE STATE 2020 Total Numbers	
RACE DIVERSITY	Executive Members
AFRICAN AMERICAN	3,500
HISPANIC	3,500
INDIA	3,500
ASIAN	2,000
<b>TOTAL</b>	<b>12,500</b>



# EXECUTIVE MEMBERSHIP BY TITLE AND SENIORITY

94% OF THE TALENT WE REPRESENT ARE AT THE VP LEVEL OR ABOVE



Private and public sector organizations  
will go to GCA first to fill their most important  
human capital initiatives



# EXECUTIVES COME FROM THESE INDUSTRIES

## INDUSTRIES

- AEROSPACE & DEFENSE
- ASSOCIATIONS
- AUTOMOTIVE
- BANKING/FINANCIAL SERVICES
- CONSUMER
- DEPARTMENT OF DEFENSE
- ENERGY
- ENGINEERING CONSTRUCTION & OPERATIONS
- ENTERTAINMENT
- HEALTHCARE
- HIGH TECH
- HIGHER EDUCATION & RESEARCH
- HOSPITALITY
- IM&C
- INSURANCE
- LIFE SCIENCE
- LOGISTICS SERVICE PROVIDER
- MEDIA
- MILL PRODUCTS
- MUSEUM
- NOT FOR PROFIT
- OIL & GAS
- PRIVATE EQUITY
- PROFESSIONAL SERVICES
- PUBLIC SECTOR
- RESEARCH
- RETAIL
- TELECOMMUNICATIONS
- UTILITIES
- UTILITIES/WASTE
- WHOLESALE DISTRIBUTION



## INDUSTRY SEGMENTS

- Advertising
- Aerospace & Defense Manufacturing
- Augmented Reality
- Automotive
- Battery – Power
- Broadcasting
- Building Materials
- Cable & Internet Provider
- Children's museums
- Cloud Computing
- Communications
- Computer Networking
- Construction & Mining Equipment
- Consumer Electronics
- Consumer Packaged Goods
- Contract Research Organization
- Credit Reporting
- Cybersecurity
- Data Center
- Defense
- Digital Design
- Diversified Media
- Electric or Electric & Gas
- Electronic Components
- Engineering Construction & Operations
- Entertainment
- Fast Moving Consumer Goods (FMCG)
- Federal Reserve Bank
- Financial Consulting
- Financial Service Provider
- Food
- Foreign Direct Investment - Government
- Agency
- Foundations
- Freight & Logistics
- Gaming
- General Industrial Machinery & Equipment
- Grocery & Drug
- Health and Wellness
- Health/Medical
- Healthcare
- Hi Tech Conglomerate
- Home Services
- Hotels
- Household & Personal Care
- Hyperconvergence
- Incubator
- Industrial Conglomerate
- Industrial Machinery & Components
- Information Management Services
- Information Technology Research
- Insurance
- Internet Services
- Investing
- Investment Banking
- Investment Management
- Leadership & Change Management
- Life Science Research
- Lifting Material Handling & Railroad Equipment
- Loyalty Marketing Services
- Luxury Brands
- Management Consulting
- Marketing Research
- Mass media
- Media
- Medical Devices
- Mortgage Banking
- Multilateral Development Bank
- Newspapers and Magazines
- Nonclassifiable Establishments
- Not For Profit
- Original Equipment Manufacturer
- Other Services
- Pediatric Nutrition
- Pharmaceuticals
- Primary Metals & Steel
- Private Equity
- Professional Services
- Professional Services – Audit & Tax
- Professional Services – Consulting
- Professional Services – Engineering
- Professional Services – IT Services
- Professional Services – Legal & Services
- Public Charity – 501 c3
- Public Sector
- Radio/Wireless
- Real Estate
- Renewable Energy
- Rental and Leasing
- Retail
- Risk Advisory
- SCM - OnLine Auctions
- Securities & Investment
- Semiconductor Manufacturers
- Software
- Technology Conglomerate
- Telecommunications Equipment
- Telecommunications Services
- Telephone
- Theater Productions
- Travel Services
- Universities & 4 Year Colleges
- US Army
- Venture Capital
- Wholesale Distribution

# EXECUTIVES COME FROM THESE COMPANIES / INSTITUTIONS

## A

Ashby Investments LLC  
Centre Partners Management LLC  
AAR CORP  
Accenture  
Aceso Innovation Partners LLC  
Advance/Newhouse Companies  
Aetna  
Ahold Delhaize  
AIA Group Limited  
Altran North America  
Alvarez & Marsal  
Amazon.com, Inc.  
American Automobile Association  
American Journeys  
Apple Inc.  
Apriva  
arago GmbH  
Arise Virtual Solutions  
Arkit Consultants LLC  
Avanade  
Ayar Labs, Inc.

## B

B Harris Consulting  
Bank of New York Mellon  
BBDO  
Becton, Dickinson and Company  
Blackbaud Inc.  
Bloomin Brands  
BluePrinter ApS  
Boehme Eckhart, LLC  
Boldstart Ventures  
Bombardier  
Bose Corporation  
Boston Globe Media Partners  
British Gas  
BT Global Services plc  
Bulldog Theatrical  
Business Synergy Inc.

## C

CA Technologies  
Caesars Entertainment Corporation  
Calta Consulting LLC  
Capital One Financial Corporation  
Carpenter Technology Corporation  
Celonis  
Ceramica San Lorenzo  
CFO Resource Management  
Chanel S.A.  
Citigroup Inc.

Cluster HQ  
CNA Financial Corporation  
Columbia University  
Comcast  
Connecticut State Colleges and Universities  
Corvus Analytics LLC  
Covisint Corporation  
CR Bard  
Crow's Nest Consulting, LLC  
Cubic Corporation  
CyberX

## D

Daiichi Sankyo  
DAISA Enterprises  
Data Remote Inc.  
Deep Water Point  
Dimension Data  
DJB Consulting  
Drexel University  
Duke University  
DXC Technology (formerly CSC)

## E

EagleNext Advisors, LLC  
Electro Scientific Industries  
Elesta Srl  
Emergence Advisors LLC  
Environmental Investment Partners  
Equifax Inc.  
EY  
Eye Verify, Inc.

## F

Fairchild Global Advisors, LLC.  
Fannie Mae  
Fareportal, Inc  
Federal Reserve Bank of Boston  
Feld Entertainment  
Fidelity Investments  
Fluor  
Fortium Partners  
Fortune Brands Home & Security  
Found Animals Foundation, Inc  
Frontier Communications Corporation  
FTI Consulting

## G

Game Change Agency  
Gartner, Inc.  
GEC Risk Advisory LLC

General Electric  
General Motors Company  
Glacier Point Ventures  
Global Foundries  
Globant  
Goodlife Fitness  
Goodman  
Grant Thornton

## H

Hartford Healthcare, Inc  
Hertz Corporation  
Hewlett-Packard  
Hootsuite Media Inc.  
HPE  
Hudson Highlands Land Trust  
HyperGrid, Inc.

## I

IBM  
Iconic Pineapple, LLC  
IJS Global  
Illumin8 Advisory Services & Outsourcing Solutions LLC  
Index AR Solutions  
Indigo  
Infogix, Inc.  
Infor, Inc.  
Innofactor Plc  
Innosight LLC  
Innovation Minds  
Integer Holdings Corporation  
Intel Corporation  
IntelliMagic  
Inter-American Development Bank  
InterContinental Hotels Group PLC  
Intermex Wire Transfer, LLC  
Internet2  
Intralinks Holdings, Inc.  
Inversora Agroindustrial Global  
Investe SÃ£o Paulo  
IPSoft, Inc.  
Iron Mountain Inc.  
IronNet Cybersecurity Inc.  
ITT Exelis  
IXIA

## J

J. Whitehead & Associates, Inc.  
J.D. Power  
JG Media Consulting  
Jill Belconis Enterprises, LLC

## K

K&R Negotiation Associates LLC  
Ken Adams Associates  
Ken Estridge & Associates  
Keystone Strategy  
KONE Corporation  
Koninklijke Ahold N.V.  
KPMG

## L

LeapFrog Ent.  
Lenovo Group Ltd  
Lightlife Foods, Inc.  
Lindt & Sprungli USA Inc  
Liquidity Services, Inc.  
Logicalis Group  
Lord, Abbott & Co. LLC.  
Loyal 3 Securities, Inc.  
LPA Software Solutions, LLC

## M

M9 Solutions  
Magnetica Communications LLC  
MaplesFS  
Martins de Almeida  
Masco Corporation  
Masur Griffiths + LLP  
mblox  
McCormick & Company  
MCE Capital LLC  
Mead Johnson Nutrition Company  
Merrill Lynch  
MGM INNOVA CAPITAL, LLC.  
Microsoft Corporation  
Mid-Hudson Children's Museum  
Mission Health  
Mortgage Bankers Association  
myDrugCosts, Inc

## N

National Grid plc  
NCR Corporation  
Nelson Mullins Riley & Scarborough LLP  
Newark element14  
Newbury Piret & Co., Inc.  
NGA Human Resources  
NGAGE Organization Development Consulting  
Nike, Inc.  
Nimbus  
Nokta LLC

North Carolina A&T State University  
Novartis  
Novetta Solutions, LLC  
NuVascular Technologies

**O**

Oakstone Capital LLC  
Omnia Economic Solutions  
Only Good News LLC  
Openet, Inc.  
Oracle Corporation

**P**

Pallas-Athena Group, LLC  
Pamal Broadcasting, Ltd.  
Paul Lussier Design  
Pepin Consultants LLC  
PepsiCo  
Perfecto Mobile  
Photon Consulting LLC  
PHT Corporation  
Pinnacle Foods, Inc.  
Pitney Bowes Inc.  
Polycom, Inc.  
Proa Global Partners LLC  
Procter & Gamble Co.  
Procyon Ventures  
Produce Marketing Association  
Progressity, Inc.  
Prudential Financial  
PTC, Inc.  
Pure Energy Corporation  
PWC

**Q**

Quarles Petroleum Inc  
Quintiles Transnational, Inc.

**R**

RA Power & Light Inc  
Ralph Lauren Corporation  
Ready, Set, Sync!  
Red Hat Inc.  
REL Advisors  
Relativity6

Rinato Advisors LLC  
Rockefeller Archive Center, Rockefeller  
University  
Root9b  
Rosemount Consulting Partners LLC  
Royal Dutch Shell plc  
Royal Zoological Society of Scotland

**S**

Sabianet Inc.  
San Pedro Bio Energy  
SAP  
Scanlon Management Consulting  
Schneider Electric  
Senary LLC  
Sequoia Consulting  
Shop4Clouds  
Sider Road Group of Companies, LLC  
SimpliVity Corporation  
Siris Capital Group, LLC.  
Skytap, Inc.  
SmartCube Holdings Inc.  
Softtek  
Spider Consulting  
Squarespace  
SSonnabend Consulting  
Steinway Musical Instruments, Inc.  
Sugar CRM  
Sungard Availability Services  
Synsort Incorporated

**T**

Tavistock Group  
TCC Global  
Telmex USA & Telvista  
The Blackstone Group  
The Busick Group  
The Entrepreneurs' Fund  
The Executives' Club of Chicago  
The ILEX Group  
The Keck Group  
The Leading Network  
The Manitowoc Company, Inc.  
The Media Science LLC  
The Stephens Group  
The Wendy's Company  
Time Warner Cable

Tivorsan Pharmaceuticals  
Toshiba Global Commerce Solutions  
Two Sigma Investments, LP

**U**

Ubee Interactive  
Unilever PLC  
United Decisions  
United States Air Force  
United States Anesthesia Partners  
United States Army  
United States Military Academy  
University of California, Berkeley  
University of Michigan  
Utility One Source

**V**

Valence Ventures  
View Consulting, LLC  
ViON Corporation  
Vivanda  
Vodafone Germany

**W**

Walmart  
Wells Fargo & Company  
Westnet Incorporated  
White & Case LLP  
Wolters Kluwer ELM Solutions

**X**

Xerox  
XPO Logistics, Inc.

**Y**

Yale University  
Y-Apply, Inc.  
YAXA  
Yoi Corporation

**Z**

ZH Healthcare  
Zuora Inc.



# GCA EXECUTIVE MEMBERS COME FROM THESE 405 ACADEMIC INSTITUTIONS

## A

Adelphi University  
 American Public University System  
 American University  
 American University Washington College of Law  
 Amherst College  
 Amos Tuck School of Business at Dartmouth  
 Arizona State University  
 Auburn University  
 Australian Graduate School of Management  
 Azusa Pacific University

## B

Baldwin Wallace College  
 Bangalore University  
 Barry University  
 Bates College  
 Baylor University  
 Bentley University  
 Birla Institute of Technology and Science, Pilani  
 Boston College  
 Boston University  
 Brandeis University  
 Brazilian Air Force Institute of Technology  
 Brigham Young University  
 Brooklyn College, CUNY  
 Brown University  
 Bryant University  
 Bucknell University

## C

California State University-Chico  
 Canisius College  
 Carl von Ossietzky Universität Oldenburg  
 Carnegie Mellon University  
 Central Michigan University  
 Chatham University  
 City University of New York  
 City University, London  
 Clarkson University  
 Cleveland State University  
 Colby College  
 Colegio de Estudios Superiores de Administracion (C.E.S.A)  
 Colgate University  
 Columbia Business School  
 Columbia Law School  
 Columbia University  
 Cornell University  
 Coventry University  
 Cranfield University

## D

Danmarks Tekniske Universitet  
 Dartmouth College  
 Davis and Elkins College  
 Deakin University, Australia  
 Delhi University  
 Demontfort University  
 DePaul University - Charles H. Kellstadt  
 Graduate School of Business  
 Depauw University  
 DeVry University  
 Dickinson College  
 Drexel University  
 Dublin Institute of Technology  
 Duke University

## E

East Tennessee State University  
 Eastern Kentucky University  
 Eastern New Mexico University  
 Ecole nationale des Ponts et Chaussées  
 Ekonomická univerzita v Bratislave  
 ESADE Business & Law School

## F

Fairfield University  
 Ferris State University  
 Florida Atlantic University  
 Florida Atlantic University  
 Florida International University  
 Florida State University  
 Fordham Gabelli School of Business  
 Fordham University School of Law  
 Fordham University, Graduate School of Business Administration  
 Franklin & Marshall College  
 Fresno State  
 Fundação Getulio Vargas

## G

Geneva College  
 George Mason University  
 George Washington University School of Business and Public Management  
 Georgetown University  
 Georgetown University - The McDonough School of Business  
 Georgia Institute of Technology  
 Georgia State University  
 Gettysburg College  
 GMI Engineering & Management Institute  
 Goizueta Business School, Emory University

Grinnell College  
 Gujarat University

## H

Hamburg University of Economics and Politics  
 Hanze Hogeschool Groningen  
 Hartwick College  
 Harvard Business School  
 Harvard Kennedy School  
 Harvard Law School  
 Harvard University  
 Hobart College  
 Hofstra University  
 Howard University

## I

"IAE Business School"  
 IESE Business School - University of Navarra  
 Imperial College – London  
 Indian Institute of Management  
 Indian Institute of Technology  
 Indiana University  
 Indiana University Robert H. McKinney School of Law  
 Institute of Chartered Accountants in England and Wales, (Fellow)  
 Instituto Tecnológico Autónomo de México (ITAM)  
 Instituto Tecnológico de Aeronáutica - ITA  
 Iona College  
 Iowa State University  
 Istituto Tecnico Nautico di Savona

## J

James Madison University

## K

Kettering University  
 Kiev National University  
 King's College  
 Kutztown University of Pennsylvania

## L

Lafayette College  
 Lancaster University  
 LaRoche College  
 Leiden University  
 Liceo Classico "Melchiorre Gioia"  
 London Business School

Louisiana State University  
 Loyola College in Maryland  
 Loyola University Chicago

## M

Manchester Polytechnic  
 Mangalore University  
 Manhattan College  
 Marist College  
 McGill University  
 Melbourne University  
 Mercy College  
 Michigan State  
 Michigan State University  
 Middle East Technical University  
 Middlebury College  
 Middlesex County College  
 Milan State University  
 Mississippi State University  
 Missouri State University  
 MIT  
 MIT Sloan  
 Molloy College  
 Montclair State College  
 Montclair State University  
 Montpellier & Toulouse Universities  
 Morningside College

## N

National Defense University  
 National Institute of Technology  
 National War College  
 Naval Postgraduate School  
 Naval War College  
 New York University  
 New York University – Leonard N. Stern School of Business  
 North Carolina State University  
 Northeastern University  
 Northern Kentucky University  
 Northwestern University  
 Northwestern University Kellogg School of Management  
 Nottingham University  
 Nova Southeastern University

## O

Oakland University  
 Obafemi Awolowo University  
 Oberlin College  
 Oklahoma City University  
 Old Dominion University  
 Osmania University

**P**

Pace University  
 Panjab University  
 Peace Theological Seminary & College of Philosophy  
 Pennsylvania State University, The  
 Politecnico di Milano  
 Politecnico di Torino  
 Polytechnic Institute of New York  
 Pontifical Catholic University of Puerto Rico  
 Pontifical Catholic University of Rio de Janeiro  
 Pontificia Universidad Católica Madre y Maestra, Santo Domingo, Dominican Republic  
 Pratt Institute  
 Princeton University  
 Purdue University

Stanford University  
 Stanford University Graduate School of Business  
 State University College of Arts and Science Potsdam  
 State University Management, Russia  
 State University of New York  
 State University of New York at Albany  
 State University of New York at Binghamton  
 State University of New York College at Plattsburgh  
 State University of New York College at Potsdam  
 State University of New York, Buffalo  
 Stevens Institute of Technology  
 Stony Brook University  
 Suffolk University Law School  
 Syracuse University  
 Syracuse University – S.I Newhouse School of Public Communications

Università degli Studi di Udine  
 Université de Marne-la-Vallée  
 Université Paris Dauphine  
 Universiti Teknologi Malaysia  
 University College Cork  
 University ITMO, St. Petersburg, Russia  
 University of Alabama at Birmingham  
 University of Alabama  
 University of Amsterdam  
 University of Arizona  
 University of Arkansas at Fayetteville  
 University of Birmingham  
 University of Buenos Aires  
 University of Buffalo  
 University of California, Berkely  
 University of California Berkley  
 University of California, Davis  
 University of California, Riverside  
 University of California, San Diego  
 University of California, Santa Barbara  
 University of Cambridge  
 University of Canberra  
 University of Central Oklahoma  
 University of Chicago  
 University of Chicago Booth School of Business, The  
 University of Colorado  
 University of Connecticut  
 University of Connecticut School of Law, The  
 University of Dallas  
 University of Dayton  
 University of Denver  
 University of Edinburgh, The  
 University of Florida  
 University of Genova  
 University of Houston  
 University of Illinois at Chicago  
 University of Illinois at Urbana Champaign  
 University of Iowa  
 University of Kansas  
 University of Liverpool  
 University of London  
 University of Louisville  
 University of Maryland  
 University of Maryland – Robert H. Smith School of Business  
 University of Massachusetts  
 University of Michigan, The  
 University of Nevada Las Vegas Lee Business School  
 University of New HavenPace University  
 University of New Orleans  
 University of Newcastle upon Tyne  
 University of North Carolina at Chapel Hill  
 University of North Carolina at Chapel Hill Kenan-Flagler Business School, (MBA)  
 University of Notre Dame – Mendoza College of Business  
 University of Nottingham  
 University of Oxford

University of Pennsylvania, The Wharton School  
 University of Pennsylvania  
 University of Phoenix  
 University of Pittsburgh  
 University of Pittsburgh – Joseph M. Katz Graduate School of Business  
 University of Poitiers  
 University of Pretoria (South Africa), Gordon Institute of Business Science  
 University of Puerto Rico  
 University of Puerto Rico, School of Engineering  
 University of Puget Sound  
 University of Pune  
 University of Queensland, Australia  
 University of Rhode Island  
 University of Rochester  
 University of Rooster  
 University of Saint Thomas  
 University of Sao Paulo, Law  
 University of Saskatchewan  
 University of Scranton  
 University of South Africa (Pretoria)  
 University of Southern California  
 University of Tennessee-Knoxville  
 University of Texas at Austin, The  
 University of Texas at Austin, The Red McCombs School of Business

**Q**

Queens College  
 Queens University  
 Queensland University of Technology

**T**

Technical University of Rheinland-Pfalz, Germany  
 Technische Universität Wien  
 Texas A&M University  
 Texas Christian University  
 Texas Christian University  
 Thunderbird American Graduate School  
 Trevecca Nazarene College  
 Trinity College  
 Trinity University  
 Tufts University  
 Tufts University – The Fletcher School of Law and Diplomacy  
 Tulane University

**R**

Ramapo College  
 Reading University  
 Reed College  
 Regis University  
 Rensselaer Polytechnic Institute  
 Rhodes College  
 Robert Morris University  
 Rochester Institute of Technology  
 Roger Williams University  
 Rose-Hulman Institute of Technology  
 Rutgers University

**U**

UF Hough Graduate School of Business  
 U.S. Army War College  
 U.S. Coast Guard Academy  
 United States Military Academy at West Point  
 United States Naval Academy  
 Universidad Antonio de Nebrija, Madrid, Spain  
 Universidad de Buenos Aires  
 Universidad de Lima  
 Universidad de Los Andes  
 Universidad de Santiago de Compostela  
 Universidad del CEMA  
 Universidad Metropolitana  
 Universidad Panamericana  
 Universidad Politécnica de Madrid  
 Universidad Simón Bolívar  
 Universidade do Estado do Rio de Janeiro  
 Universidade Federal de Minas Gerais  
 Universidade Federal do Rio de Janeiro  
 Università degli Studi di Napoli 'Federico II'

**S**

Sacred Heart University  
 Saint Lawrence University  
 Saint Louis University  
 Sam Houston State University  
 San Diego State University  
 Santa Clara University  
 Sapienza Università di Roma  
 School of Advanced Air and Space Studies  
 Seattle University  
 Skidmore College  
 Slippery Rock University  
 South Dakota State University  
 Southampton University, UK  
 Southern CT State University  
 Southern Illinois University  
 Southern Methodist University Dedman School of Law  
 St. Xavier's College

University of Central Oklahoma  
 University of Chicago  
 University of Chicago Booth School of Business, The  
 University of Colorado  
 University of Connecticut  
 University of Connecticut School of Law, The  
 University of Dallas  
 University of Dayton  
 University of Denver  
 University of Edinburgh, The  
 University of Florida  
 University of Genova  
 University of Houston  
 University of Illinois at Chicago  
 University of Illinois at Urbana Champaign  
 University of Iowa  
 University of Kansas  
 University of Liverpool  
 University of London  
 University of Louisville  
 University of Maryland  
 University of Maryland – Robert H. Smith School of Business  
 University of Massachusetts  
 University of Michigan, The  
 University of Nevada Las Vegas Lee Business School  
 University of New HavenPace University  
 University of New Orleans  
 University of Newcastle upon Tyne  
 University of North Carolina at Chapel Hill  
 University of North Carolina at Chapel Hill Kenan-Flagler Business School, (MBA)  
 University of Notre Dame – Mendoza College of Business  
 University of Nottingham  
 University of Oxford

University of the West Indies  
 University of the Witwatersrand  
 University of Toledo  
 University of Toronto  
 University of Vermont  
 University of Virginia  
 University of Virginia Darden School of Business  
 University of Wales, Cardiff  
 University of Washington  
 University of Waterloo  
 University of West Georgia  
 University of Wisconsin-Madison  
 University Visveswaraya College of Engineering  
 UNSW Australia  
 Upsala College  
 Ursinus College  
 US Army War College  
 US Coast Guard Academy  
 UTC Compiegne

**V**

Vanderbilt University  
 Vassar College  
 Vienna University of Economics  
 Villanova University  
 Virginia Commonwealth University  
 Virginia Polytechnic Institute and State University  
 Virginia Tech

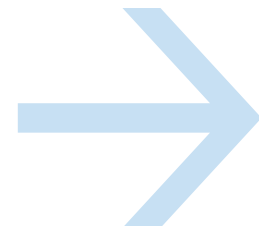
Virginia Wesleyan College  
Vrije Universiteit Brussel

**W**

Wake Forest University  
Walsh College  
Washington and Lee University  
Washington State University  
Washington University in St. Louis  
Wayne State University  
Weatherhead School of Management  
at Case Western Reserve University  
Webster University  
Wellesley College  
West Chester University  
West Virginia University  
Western Connecticut State University  
& Pace University  
Western New England College  
Westminster College  
Wichita State University  
Widener University School of Law  
Williams College  
Wirtschaftsuniversität Wien  
Wittenberg University

**Y**

Yale University  
Yale University Law School



# DISTRIBUTION OF ALL UNDERGRADUATE AND ADVANCED DEGREES

A VAST MAJORITY (82%) OF THE DEGREES AWARDED TO GCA'S EXECUTIVE MEMBERS ARE HIGHLY CONCENTRATED FROM 10% OF ALL 405 ACADEMIC INSTITUTIONS.

99%

GCA MEMBERS HAVE UNDERGRADUATE DEGREES

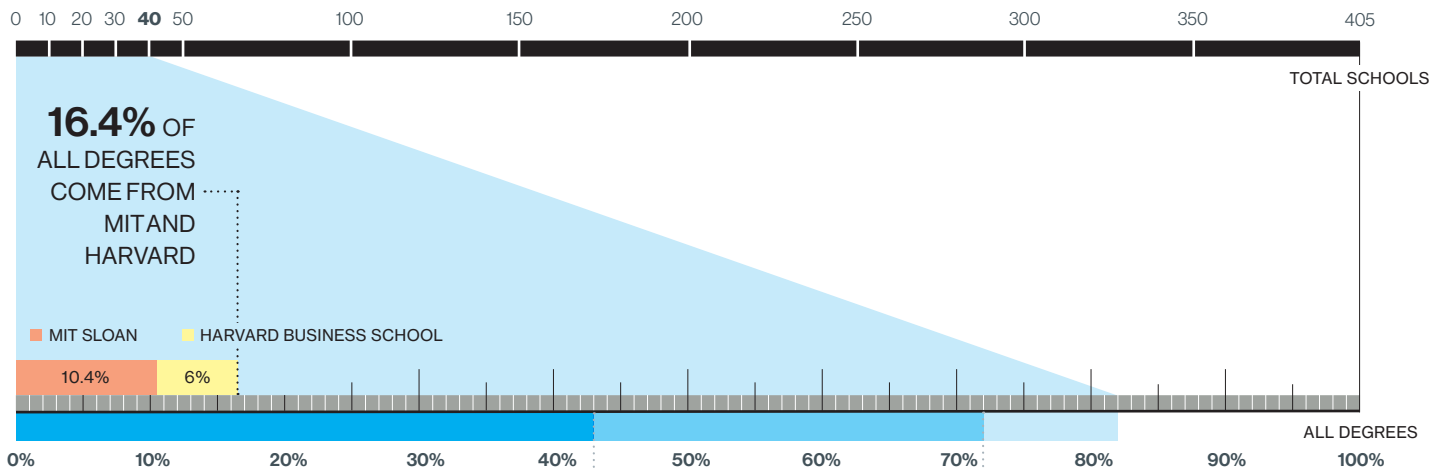
67%

HAVE AT LEAST ONE MASTERS DEGREE (OF WHICH 57% ARE MBAs)

8%

HAVE DOCTORAL DEGREES, WITH A COMBINATION OF PHD (57%) AND JD (43%)

## NOTABLE HIGHLIGHTS FROM THE TOP 40 SCHOOLS



THE TOP 12 SCHOOLS COMMAND **43%** OF ALL DEGREES

MIT, Harvard University, Columbia University, Syracuse University, University of Michigan, New York University, United States Military Academy at West Point, State University of New York, University of Pennsylvania – The Wharton School, Cornell University, Rensselaer Polytechnic Institute, University of California

19 SCHOOLS COMMAND **29%** OF ALL DEGREES

Indian Institute of Technology, Stanford University, The University of Texas at Austin, University of Virginia, Boston University, Boston College, Northwestern University, Penn State University, University of North Carolina, Arizona State University, Brown University, Clarkson University, Duke University, Rutgers University, University of Colorado, University of Notre Dame, University of Southern California, Yale University

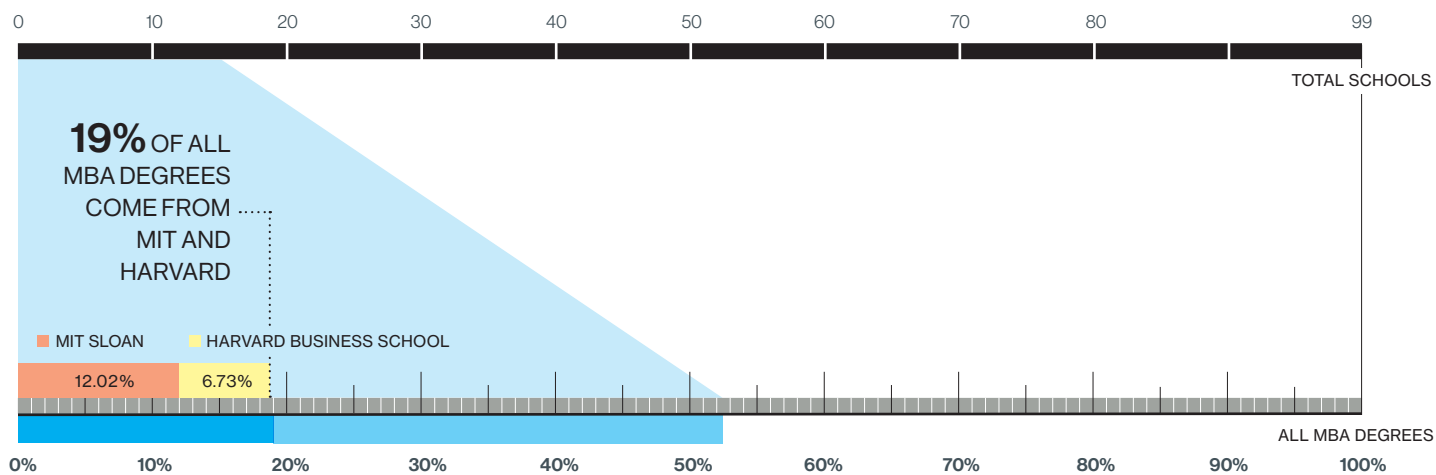
9 SCHOOLS COMMAND **10%** OF ALL DEGREES

Georgia Institute of Technology, Sapienza Università di Roma, The George Washington University, Tufts University, Universidad Simon Bolivar, University of Illinois, University of Maryland, University of Massachusetts, University of Miami

# DISTRIBUTION OF MBA DEGREES OF GCA MEMBERS

MORE THAN 50% OF ALL MBA DEGREES COME FROM 15 BUSINESS SCHOOLS OUT OF A POOL OF 99

MIT SLOAN AND HARVARD BUSINESS SCHOOL COMMAND THE LION'S SHARE (19%) OF ALL MBA DEGREES



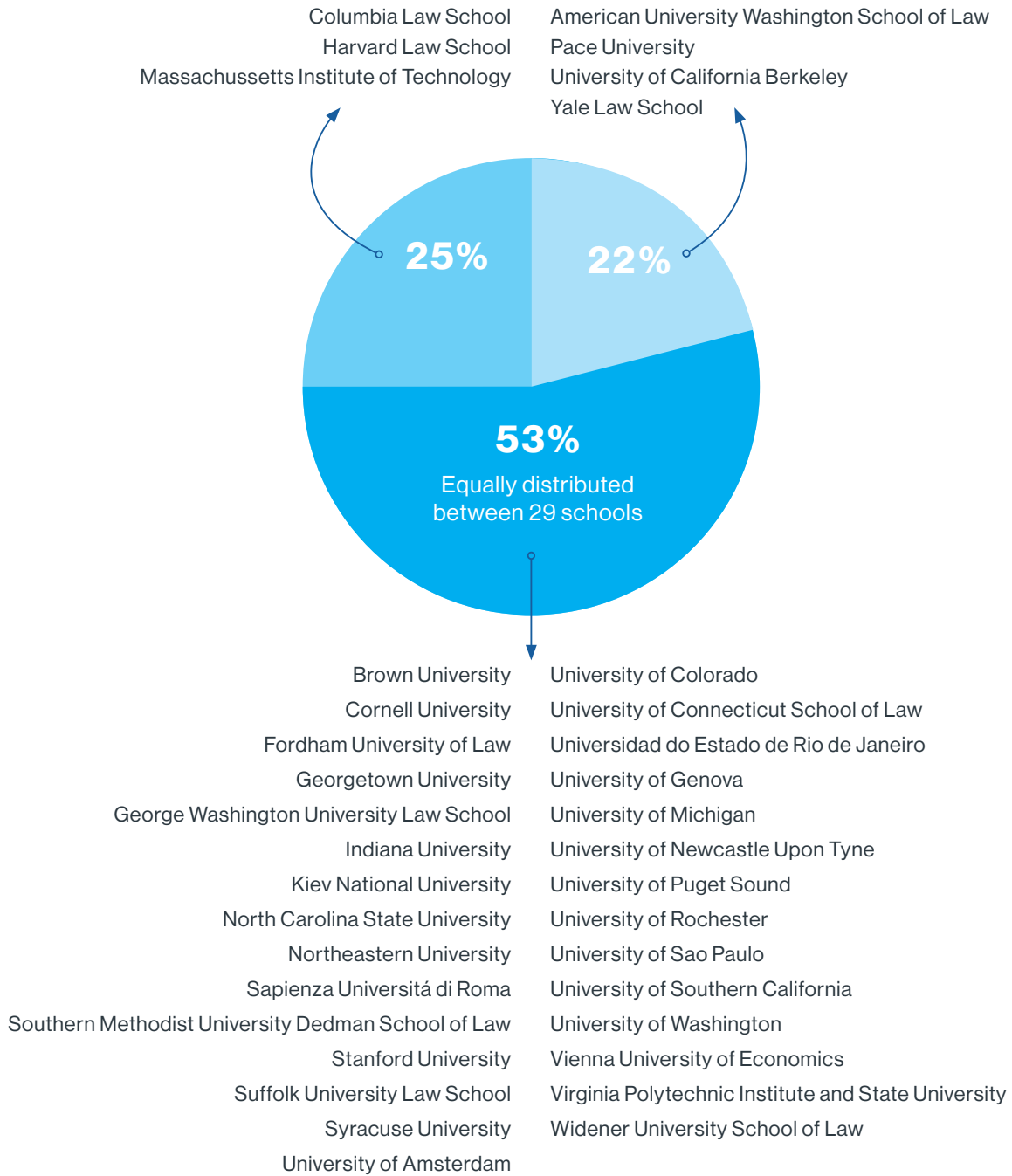
## PERCENTAGE OF MBA DEGREES AT THE TOP 15 MBA SCHOOLS

MIT Sloan	12.02%
Harvard Business School	6.73%
New York University – Leonard Stern School of Business	4.33%
University of Pennsylvania, The Wharton School	4.33%
Columbia University – Columbia Business School	3.37%
The University of Chicago Booth School of Business	2.88%
Boston University – School of Management	2.40%
Georgetown University – The McDonough School of Business	2.40%
Northwestern University – Kellogg School of Management	2.40%
University of Michigan	2.40%
University of North Carolina at Chapel Hill – Kenan-Flager Business School, MBA	2.40%
Stanford University Graduate School of Business	1.92%
The University of Texas at Austin	1.92%
Boston College – Wallace E. Carroll Graduate School of Management	1.44%
University of Virginia Darden School of Business	1.44%
<b>TOTAL</b>	<b>52.40%</b>

# DISTRIBUTION OF DOCTORAL DEGREES

8% OF GCA EXECUTIVE MEMBERS HAVE DOCTORAL DEGREES  
FROM A TOTAL OF 36 SCHOOLS

## REPRESENTATION OF DOCTORAL DEGREES BY SCHOOLS





43% OF ALL DOCTORAL DEGREES ARE JD (LAW) AND 57% OF ALL DOCTORAL DEGREES ARE COMPRISED OF MOSTLY SCIENTIFIC DISCIPLINES AND TO A LESSER EXTENT HUMANITIES DISCIPLINES

PERCENTAGE OF DOCTORAL DEGREES

