

BECOME A GCA GAME CHANGER.

GCA helps executives
move faster smarter.
When leaders connect
new ideas are born
solutions emerge.
The world changes!



GCA is an online
networking &
matching platform
for the world's
most influential
decision makers.

To learn more about becoming a GCA Game Changer
use [this link](#) to schedule an exploratory call.



GAME CHANGE AGENCY

HOME TO GAME CHANGERS



INTRODUCING GAME CHANGE AGENCY

GCA is an exclusive network for preeminent decision makers, influencers and thought leaders. Our members are the C-suite executives, board members and advisors to the most successful organizations in the world. They are all recognized as Game Changers by industry experts and come from the private and public sectors across all industries and functional areas worldwide.

GCA offers members an immersive and holistic experience designed to engender career management, brand enhancement and purposeful networking. Our mission is to enable industry-leaders to exchange knowledge, foster business relationships and elevate professional growth for individuals and corporations at the governance levels worldwide. Our programs for members include:

*we encourage you to visit our public [website](#)

Member Programs

Connect with Decision Makers

GCA bridges the best of the high-touch traditions you have come to expect from the old-world with the connectivity and reach you gain from social networks of the new era.

SAMPLE GCA MEMBERS



David Johnson
Senior Managing Director
Blackstone
Former Head of Corporate Development, IBM. Recognized by industry insiders as a king of corporate M&A: acquired +130 companies



Alexandra Wright-Gladstein
CEO
Ayar Labs
Silicon photonics startup is changing the game in the semiconductor industry



Ed Sim
Founding Partner
Boldstart Ventures
Serially successful VC early stage Companies. Go to market advisor



Nick Donofrio
EVP, former
IBM
IBM Fellow Emeritus, Innovation And technology Advisor, GCA Host



Colin Parris
VP, GE Software Research
Currently Colin is a corporate officer of GE. He has responsibility for worldwide SW and is one of the key drivers of GE's digital pivot into the Industrial Internet of Things.



Filippo Passerini
CIO, former
Procter & Gamble Co.
Globally recognized information technology and shared services thought leader



Tom Hill
Four Star General
United States Army
Highly decorated combat soldier/diplomat, and widely respected leader



John Hinshaw
Former EVP
Hewlett Packard Enterprise
A rising force in the world of global technology. General Manager / Technologist / Board Director



Moni Miyashita
Partner
Innosight
Former IBM senior Corporate Development executive and Senior Advisor, M&A Practice, Motrinsey & Company.



Ginny Clark
Managing Director
Beech Hill Securities
One of the original female Wall Street game changers. First Female Wall St. trader during 60s



Marie Wiecek
General Manager
Blockchain, IBM
A veteran IBM SW leader, a hands on senior executive with worldwide P&L, experience in hardware, software and services delivery leading teams of up to 10,000 with \$9 billion in revenue



Michael Jackman
CEO
Mach7 Technologies
Former CEO Americas Healthcare Digital, GE. General Manager - International experience in the Health Care and Information Technology Industry



Phil Guido
General Manager
Global Technology Services IBM
Senior business executive with more than 25 years experience in all facets of executive business



Frank Johnson
General Manager
VP, Sales
Intel Corporation
Visionary leader that quickly grasps near term initiatives and opportunities while foreseeing long term opportunities



Mike Monahan
CFO
Pitney Bowes Inc.
A proven executive that has led all aspects of general and financial management at a Fortune 500



Alberto Arciniega
VP, WW Industry & Global Accounts
Microsoft Corporation
Seasoned Sales leader with successful Track record of success at IBM and Microsoft



Nicholas Bertram
Senior Vice President
Ahold USA
Rising star in the consumer food retail industry. Meteoric success at Walmart And Ahold USA



Jim Routh
Chief Security Officer
aetna
Globally recognized Information Security leader



Richard Dutton
Head of Data Analytics & Cloud Applications
Millennium Management
Rising star in the field of Data Science



Brent Baker
Retired, Major General
United States Air Force
High performing senior logistics professional who has built, merged, and led organizations with up to 84k workforce, \$80B in budgets across 200 locations



Peter Stern
VP, Cloud Services
Apple Inc.
Dynamic technology, media & telecommunications executive. Former EVP, Time Warner Cable



Eric Kuisch
Chief Technology Officer
Vodafone Germany
One of Europe's foremost CTOs. Responsible for driving and implementing Vodafone's technology Strategy initiatives



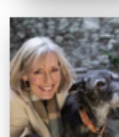
Jeff Parkinson
Managing Partner
KEC Ventures
One of the leading New York VCs specialized in early stage investing



Al Zollar
Executive Partner
Siris Capital Group
Former General Manager, IBM Tivoli Software, he held leadership roles for all units within IBM's Software Group division and was a Senior Operating Executive of IBM Corporation



Rob Ramrath
Former, CIO
Bose Corporation
Expertise: Digital eCommerce and Change Management; business acumen and technology advisor



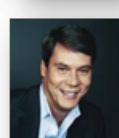
Kathy Sorley
Director, Thinker In Residence
Royal Zoological Society of Scotland
Media executive, creativity and innovation, client and board Relationship management, GCA Studios Host



Ilieva Ageenko
Managing Director
Grant Thornton
Broad gauged experience in commerce & consumerization of emerging technologies - invaluable for guiding GCA's big data and analytics strategies.



Nicole Anasenes
CFO
Square Space
Former CFO INFOR, senior Finance Corp Dev executive, IBM. Business acumen Corporate development advisor



Doug Schmidt
CIO
Dentsu Aegis Network
Big Data and Analytics Successful CIO and technologist of Startups and Large Enterprises



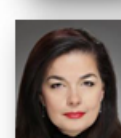
Lonnie Jaffe
Former CEO
Syncsort
Key advisor regarding digital driven growth strategies and new business models.



Joao Perez
SVP, Global Sales
NCR Corporation
Sales leadership acumen and Go to market strategies



Caglayan Arkan
General Manager
Microsoft Corporation
Sales leadership acumen And go to market strategies



Ana Dutra
CEO
The Executive Club of Chicago
International profile includes Former roles: CEO, General Manager, Partner Korn Ferry, Accenture, Mercer, CSC Index



GCA CAREER ADVANCEMENT

The power of the GCA network emanates from the broad cross-section of key decision makers and influencers from all industries and functional areas worldwide. As ambassadors of their company, members use GCA to fill their most senior-level human capital needs and is ideal for succession planning. Conversely, GCA members are interested in securing career advancement opportunities. Therefore, GCA Career Advancement functions as a two-way system. Members acquire talent while other members secure opportunities. Opportunities include Board Directorships, Advisory Board Members, Full Time & Interim Employees, SME's, Consultants, Guest Speakers, Authors/Writers and more.

GCA VENTURES

At our core, GCA is a network of highly accomplished individuals. GCA members are interested in identifying investment opportunities (for their individual portfolios or on behalf of their investment institutions). Also, the GCA network is comprised of individuals with extended track records of success seeking to raise capital for either their startup, venture fund or organization. Therefore, GCA Ventures functions as a two-way system. Members explore and fund investment opportunities while other members raise capital, helping drive advancement and innovation.

GCA STUDIOS

GCA Studios is like TED Talks but with continuity centered around each individual Host. GCA members become Hosts on GCA Studios. Each Host has their own public, web-based tv show/podcast featuring varying topics, issues and themes. Guest speakers come from the GCA membership as well as individuals external to GCA. Therefore, GCA Studios functions as a two-way system. Members host their own show while other members appear as guest speakers. This brings together prominent decision makers, influencers and thought leaders to discuss game changing topics impacting business, politics, culture and more.

GCA GANDALF

The best way to understand the road ahead is to ask the traveler on their way back! GCA Gandalf is a way for members to share their wisdom, guidance and deep domain expertise to foster profound and enduring mentor-based relationships. Think of the GCA Gandalf program as a two-way thought leadership exchange ideal for cross pollinating thought leadership and domain expertise. Members provide mentorship while other members receive mentorship and vice versa. It works both ways!



GCA EVENTS

Through GCA Events, members attend regional/national networking events to foster business relationships, share best practices and elevate professional growth. They are an excellent way to develop synergies with GCA members and their respective organizations at the governance levels and is ideal for lead generation and business development. GCA Events function as a two-way system. Members host in-person networking events while other members attend as their guests. Venues range from small intimate lunch/dinner parties at restaurants or private homes to larger conference-like settings to in-person filmed events with a live audience.

GCA PUBLIC RELATIONS

A benefit of GCA membership includes public relations to enhance and manage your personal brand. We offer “Spotlights, “Announcements” and “Bio Videos”. Spotlights are biographical in nature and shine the light on the remarkable careers and accomplishments of GCA members. Announcements showcase career promotions, board and advisory appointments, speaking engagements and noteworthy occasions (like a new book, etc.). Bio Videos are short, 2-4 minutes in length, and provide a high-level takeaway on each GCA member’s background, accomplishments, interests and aspirations. Each are professionally curated to showcase members in the best light possible. GCA members like to share these PR elements through their LinkedIn, Facebook, Twitter accounts, personal websites, etc.

GCA PREMIUM PARTNERSHIPS

GCA’s Premium Partnership Program, designed for companies and universities of all sizes, enables partners to develop synergies with GCA members and their respective organizations at the governance levels worldwide. Organizations and universities advance a wide range of strategic initiatives by participating in a variety of our partner programs.

GCA TAP

It’s All About 1° of Separation vs. 6°

Only GCA members and Premium Partners gain access to TAP, GCA’s highly curated online networking platform that provides limitless opportunities to network purposefully at the governance levels worldwide. All member programs come to life inside TAP (we like to say, “The More You TAP, the More Things Happen!”).



CHANGING THE
WORLD
TOGETHER

GCA helps executives move faster and smarter. When leaders connect, new ideas are born, solutions emerge and the world changes!

UNDERSTANDING
NEXT STEPS
&
TIME
COMMITMENT

The first step in GCA membership is to be nominated by a current member. Every nomination is reviewed by the GCA Admissions Office.

If approved, an official invitation is extended. Then, all new members have an introductory phone call with Spencer Lussier, GCA Co-Founder, to learn more about GCA and the benefits of membership.

Once you accept membership to GCA, these are the following steps:

1. We activate you as a new member and provide login access to GCA's member-only networking platform.
2. We coordinate a 2nd phone call aimed to get you traction regarding the various GCA service offerings that are of interest to you.
3. GCA's curation team builds your personal Profile Page inside GCA's on-line community. We showcase your lifetime of achievements and interests to GCA's network of decision makers and influencers.

After the 2nd phone call, your on-boarding process is complete. Now you are ready to tap into GCA's highly curated community of game changers and start networking!

GCA membership is designed to engender intimate and life-long relationships. GCA bridges the best of the old-world, high-touch, white-glove experience that you get from your private club with the connectivity and reach that you get from social networks of the new era.

We are always here for follow-up phone calls, face to face meetings or just getting together.

We know this is a lot of information! Hopefully, it was presented in a logical and digestible manner. Speak soon!

MEMBERSHIP CRITERIA

GCA Membership is by invitation. To be considered for membership, a current member must nominate you. Every nomination is then pre-vetted and approved by the GCA Admissions Office. We follow the axiom “birds of a feather fly together”.

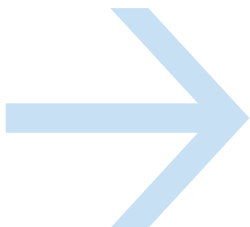
All GCA members carry a certain reputation with them and are some of the most sought-after individuals in the world. They have unique accomplishments making the total GCA network an important force for global positive change.

All GCA members are outstanding individuals who possess the expertise needed to drive business model transformation and innovation. Companies and institutions look for GCA Game Changers as board directors, board advisors, SME’s, potential employees, consultants and more.

All GCA members have achieved mastery in their respective fields and typically have reached the Vice President level or above (or a corresponding level of seniority in the public sector. They are decision makers, they are influencers, they are recognized as Game Changers.

The GCA network is a microcosm of the global economy. Members come from the private and public sectors across all industries and functional areas. Membership is composed of senior-level executives, professionals and entrepreneurs, government and military officials, leaders of universities, thought leaders and influencers.

GCA members are nominated to and accepted by the GCA Admissions Office without regard to gender, race, religion or age.



BECOME A GCA GAME CHANGER!

JOIN US.

MEMBERSHIP KEY DEMOGRAPHICS

GCA REPRESENTS INDIVIDUALS IN NORTH AMERICA, EMEA,
AND REST OF WORLD, PRIMARILY ASIAPAC AND THE BRICS.

THE PRIVATE SECTOR

GCA has organized the private sector into 35 industry verticals encompassing more than 160 industry sub-segments. In the future GCA will add industry verticals to accurately reflect the rapidly evolving global marketplace.

THE PUBLIC SECTOR

GCA has organized the Public Sector (not for profit) into five broad categories (see graphic below). GCA represents individuals from the public sector that have attained the following levels of seniority: Senior Executive Service, Elected Leaders and Appointed Senior Leaders, General-Colonel, and Key Employees.



FEDERAL / STATE / LOCAL GOVERNMENTS

MILITARY SERVICE

HIGHER EDUCATION STATE AND FEDERAL

FOUNDATIONS, PRIVATE / COMMUNITY

ASSOCIATIONS

The GCA Network is a Microcosm
of the global marketplace



KEY DEMOGRAPHICS

THE FOLLOWING TABLES ILLUSTRATE THE CURRENT AND PROJECTED DEPTH AND BREADTH OF GCA'S TALENT POOL BY: REGIONS OF THE WORLD, PRIVATE & PUBLIC SECTOR, AND ACTIVE VS RETIRED

CURRENT STATE 2017

REGION	Executive Members
APAC	2%
EMEA	8%
LATIN AMERICA	1%
NORTH AMERICA	89%

FUTURE STATE 2020

REGION	Executive Members
APAC	17%
EMEA	33%
BRIC	17%
NORTH AMERICA	33%

FUTURE STATE 2020

REGION	Executive Members
APAC	25,000
EMEA	50,000
BRIC	25,000
NORTH AMERICA	50,000

NORTH AMERICA CURRENT STATE 2017

PRIVATE AND PUBLIC SECTOR	Executive Members
PRIVATE SECTOR	97%
PUBLIC SECTOR	3%

NORTH AMERICA FUTURE STATE 2020

PRIVATE AND PUBLIC SECTOR	Executive Members
PRIVATE SECTOR	75%
PUBLIC SECTOR	25%

FUTURE STATE 2020

PRIVATE AND PUBLIC SECTOR	Executive Members
PRIVATE SECTOR	37,500
PUBLIC SECTOR	12,500

NORTH AMERICA CURRENT STATE 2017

ACTIVE vs RETIRED	Executive Members
ACTIVE	93%
RETIRED	7%

NORTH AMERICA FUTURE STATE 2020

ACTIVE vs RETIRED	Executive Members
ACTIVE	80%
RETIRED	20%

FUTURE STATE 2020

ACTIVE vs RETIRED	Executive Members
ACTIVE	40,000
RETIRED	10,000



DIVERSITY INCLUSION

THE FOLLOWING TABLES ILLUSTRATE THE CURRENT 2017 AND PROJECTED 2020 DIVERSITY BY RACE AND GENDER FOR NORTH AMERICA

NORTH AMERICA CURRENT STATE 2017	
RACE DIVERSITY	Executive Members
AFRICAN AMERICAN	3%
HISPANIC	9%
INDIA	9%
ASIAN	2%
TOTAL	23%

NORTH AMERICA CURRENT STATE 2017	
GENDER DIVERSITY	Executive Members
FEMALE	27%
MALE	73%

NORTH AMERICA FUTURE STATE 2020	
RACE DIVERSITY	Executive Members
AFRICAN AMERICAN	7%
HISPANIC	7%
INDIA	7%
ASIAN	4%
TOTAL	25%

NORTH AMERICA FUTURE STATE 2020	
GENDER DIVERSITY	Executive Members
FEMALE	30%
MALE	70%

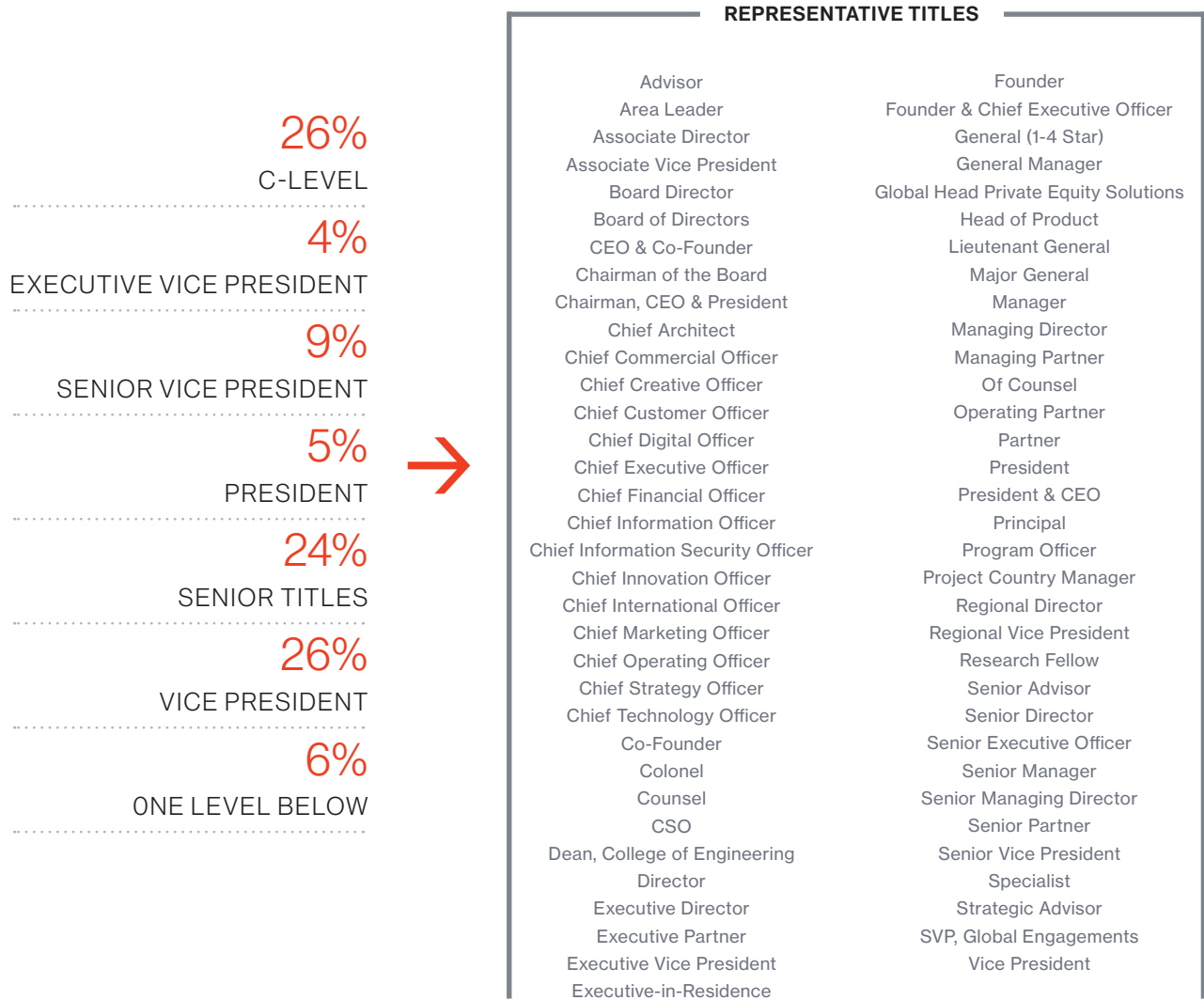
FUTURE STATE 2020 Total Numbers	
GENDER DIVERSITY	Executive Members
FEMALE	15,000
MALE	35,000

FUTURE STATE 2020 Total Numbers	
RACE DIVERSITY	Executive Members
AFRICAN AMERICAN	3,500
HISPANIC	3,500
INDIA	3,500
ASIAN	2,000
TOTAL	12,500



EXECUTIVE MEMBERSHIP BY TITLE AND SENIORITY

94% OF THE TALENT WE REPRESENT ARE AT THE VP LEVEL OR ABOVE



Private and public sector organizations
will go to GCA first to fill their most important
human capital initiatives



EXECUTIVES COME FROM THESE INDUSTRIES

INDUSTRIES

- AEROSPACE & DEFENSE
- ASSOCIATIONS
- AUTOMOTIVE
- BANKING/FINANCIAL SERVICES
- CONSUMER
- DEPARTMENT OF DEFENSE
- ENERGY
- ENGINEERING CONSTRUCTION & OPERATIONS
- ENTERTAINMENT
- HEALTHCARE
- HIGH TECH
- HIGHER EDUCATION & RESEARCH
- HOSPITALITY
- IM&C
- INSURANCE
- LIFE SCIENCE
- LOGISTICS SERVICE PROVIDER
- MEDIA
- MILL PRODUCTS
- MUSEUM
- NOT FOR PROFIT
- OIL & GAS
- PRIVATE EQUITY
- PROFESSIONAL SERVICES
- PUBLIC SECTOR
- RESEARCH
- RETAIL
- TELECOMMUNICATIONS
- UTILITIES
- UTILITIES/WASTE
- WHOLESALE DISTRIBUTION



INDUSTRY SEGMENTS

- Advertising
- Aerospace & Defense Manufacturing
- Augmented Reality
- Automotive
- Battery – Power
- Broadcasting
- Building Materials
- Cable & Internet Provider
- Children's museums
- Cloud Computing
- Communications
- Computer Networking
- Construction & Mining Equipment
- Consumer Electronics
- Consumer Packaged Goods
- Contract Research Organization
- Credit Reporting
- Cybersecurity
- Data Center
- Defense
- Digital Design
- Diversified Media
- Electric or Electric & Gas
- Electronic Components
- Engineering Construction & Operations
- Entertainment
- Fast Moving Consumer Goods (FMCG)
- Federal Reserve Bank
- Financial Consulting
- Financial Service Provider
- Food
- Foreign Direct Investment - Government
- Agency
- Foundations
- Freight & Logistics
- Gaming
- General Industrial Machinery & Equipment
- Grocery & Drug
- Health and Wellness
- Health/Medical
- Healthcare
- Hi Tech Conglomerate
- Home Services
- Hotels
- Household & Personal Care
- Hyperconvergence
- Incubator
- Industrial Conglomerate
- Industrial Machinery & Components
- Information Management Services
- Information Technology Research
- Insurance
- Internet Services
- Investing
- Investment Banking
- Investment Management
- Leadership & Change Management
- Life Science Research
- Lifting Material Handling & Railroad Equipment
- Loyalty Marketing Services
- Luxury Brands
- Management Consulting
- Marketing Research
- Mass media
- Media
- Medical Devices
- Mortgage Banking
- Multilateral Development Bank
- Newspapers and Magazines
- Nonclassifiable Establishments
- Not For Profit
- Original Equipment Manufacturer
- Other Services
- Pediatric Nutrition
- Pharmaceuticals
- Primary Metals & Steel
- Private Equity
- Professional Services
- Professional Services – Audit & Tax
- Professional Services – Consulting
- Professional Services – Engineering
- Professional Services – IT Services
- Professional Services – Legal & Services
- Public Charity – 501 c3
- Public Sector
- Radio/Wireless
- Real Estate
- Renewable Energy
- Rental and Leasing
- Retail
- Risk Advisory
- SCM - OnLine Auctions
- Securities & Investment
- Semiconductor Manufacturers
- Software
- Technology Conglomerate
- Telecommunications Equipment
- Telecommunications Services
- Telephone
- Theater Productions
- Travel Services
- Universities & 4 Year Colleges
- US Army
- Venture Capital
- Wholesale Distribution

EXECUTIVES COME FROM THESE COMPANIES / INSTITUTIONS

A

Ashby Investments LLC
Centre Partners Management LLC
AAR CORP
Accenture
Aceso Innovation Partners LLC
Advance/Newhouse Companies
Aetna
Ahold Delhaize
AIA Group Limited
Altran North America
Alvarez & Marsal
Amazon.com, Inc.
American Automobile Association
American Journeys
Apple Inc.
Apriva
arago GmbH
Arise Virtual Solutions
Arkit Consultants LLC
Avanade
Ayar Labs, Inc.

B

B Harris Consulting
Bank of New York Mellon
BBDO
Becton, Dickinson and Company
Blackbaud Inc.
Bloomin Brands
BluePrinter ApS
Boehme Eckhart, LLC
Boldstart Ventures
Bombardier
Bose Corporation
Boston Globe Media Partners
British Gas
BT Global Services plc
Bulldog Theatrical
Business Synergy Inc.

C

CA Technologies
Caesars Entertainment Corporation
Calta Consulting LLC
Capital One Financial Corporation
Carpenter Technology Corporation
Celonis
Ceramica San Lorenzo
CFO Resource Management
Chanel S.A.
Citigroup Inc.

Cluster HQ
CNA Financial Corporation
Columbia University
Comcast
Connecticut State Colleges and Universities
Corvus Analytics LLC
Covisint Corporation
CR Bard
Crow's Nest Consulting, LLC
Cubic Corporation
CyberX

D

Daiichi Sankyo
DAISA Enterprises
Data Remote Inc.
Deep Water Point
Dimension Data
DJB Consulting
Drexel University
Duke University
DXC Technology (formerly CSC)

E

EagleNext Advisors, LLC
Electro Scientific Industries
Elesta Srl
Emergence Advisors LLC
Environmental Investment Partners
Equifax Inc.
EY
Eye Verify, Inc.

F

Fairchild Global Advisors, LLC.
Fannie Mae
Fareportal, Inc
Federal Reserve Bank of Boston
Feld Entertainment
Fidelity Investments
Fluor
Fortium Partners
Fortune Brands Home & Security
Found Animals Foundation, Inc
Frontier Communications Corporation
FTI Consulting

G

Game Change Agency
Gartner, Inc.
GEC Risk Advisory LLC

General Electric
General Motors Company
Glacier Point Ventures
Global Foundries
Globant
Goodlife Fitness
Goodman
Grant Thornton

H

Hartford Healthcare, Inc
Hertz Corporation
Hewlett-Packard
Hootsuite Media Inc.
HPE
Hudson Highlands Land Trust
HyperGrid, Inc.

I

IBM
Iconic Pineapple, LLC
IJS Global
Illumin8 Advisory Services & Outsourcing Solutions LLC
Index AR Solutions
Indigo
Infogix, Inc.
Infor, Inc.
Innofactor Plc
Innosight LLC
Innovation Minds
Integer Holdings Corporation
Intel Corporation
IntelliMagic
Inter-American Development Bank
InterContinental Hotels Group PLC
Intermex Wire Transfer, LLC
Internet2
Intralinks Holdings, Inc.
Inversora Agroindustrial Global
Investe SÃ£o Paulo
IPSoft, Inc.
Iron Mountain Inc.
IronNet Cybersecurity Inc.
ITT Exelis
IXIA

J

J. Whitehead & Associates, Inc.
J.D. Power
JG Media Consulting
Jill Belconis Enterprises, LLC

K

K&R Negotiation Associates LLC
Ken Adams Associates
Ken Estridge & Associates
Keystone Strategy
KONE Corporation
Koninklijke Ahold N.V.
KPMG

L

LeapFrog Ent.
Lenovo Group Ltd
Lightlife Foods, Inc.
Lindt & Sprungli USA Inc
Liquidity Services, Inc.
Logicalis Group
Lord, Abbott & Co. LLC.
Loyal 3 Securities, Inc.
LPA Software Solutions, LLC

M

M9 Solutions
Magnetica Communications LLC
MaplesFS
Martins de Almeida
Masco Corporation
Masur Griffiths + LLP
mblox
McCormick & Company
MCE Capital LLC
Mead Johnson Nutrition Company
Merrill Lynch
MGM INNOVA CAPITAL, LLC.
Microsoft Corporation
Mid-Hudson Children's Museum
Mission Health
Mortgage Bankers Association
myDrugCosts, Inc

N

National Grid plc
NCR Corporation
Nelson Mullins Riley & Scarborough LLP
Newark element14
Newbury Piret & Co., Inc.
NGA Human Resources
NGAGE Organization Development Consulting
Nike, Inc.
Nimbus
Nokta LLC

North Carolina A&T State University
Novartis
Novetta Solutions, LLC
NuVascular Technologies

O

Oakstone Capital LLC
Omnia Economic Solutions
Only Good News LLC
Openet, Inc.
Oracle Corporation

P

Pallas-Athena Group, LLC
Pamal Broadcasting, Ltd.
Paul Lussier Design
Pepin Consultants LLC
PepsiCo
Perfecto Mobile
Photon Consulting LLC
PHT Corporation
Pinnacle Foods, Inc.
Pitney Bowes Inc.
Polycom, Inc.
Proa Global Partners LLC
Procter & Gamble Co.
Procyon Ventures
Produce Marketing Association
Progressity, Inc.
Prudential Financial
PTC, Inc.
Pure Energy Corporation
PWC

Q

Quarles Petroleum Inc
Quintiles Transnational, Inc.

R

RA Power & Light Inc
Ralph Lauren Corporation
Ready, Set, Sync!
Red Hat Inc.
REL Advisors
Relativity6

Rinato Advisors LLC
Rockefeller Archive Center, Rockefeller
University
Root9b
Rosemount Consulting Partners LLC
Royal Dutch Shell plc
Royal Zoological Society of Scotland

S

Sabianet Inc.
San Pedro Bio Energy
SAP
Scanlon Management Consulting
Schneider Electric
Senary LLC
Sequoia Consulting
Shop4Clouds
Sider Road Group of Companies, LLC
SimpliVity Corporation
Siris Capital Group, LLC.
Skytap, Inc.
SmartCube Holdings Inc.
Softtek
Spider Consulting
Squarespace
SSonnabend Consulting
Steinway Musical Instruments, Inc.
Sugar CRM
Sungard Availability Services
Synsort Incorporated

T

Tavistock Group
TCC Global
Telmex USA & Telvista
The Blackstone Group
The Busick Group
The Entrepreneurs' Fund
The Executives' Club of Chicago
The ILEX Group
The Keck Group
The Leading Network
The Manitowoc Company, Inc.
The Media Science LLC
The Stephens Group
The Wendy's Company
Time Warner Cable

Tivorsan Pharmaceuticals
Toshiba Global Commerce Solutions
Two Sigma Investments, LP

U

Ubee Interactive
Unilever PLC
United Decisions
United States Air Force
United States Anesthesia Partners
United States Army
United States Military Academy
University of California, Berkeley
University of Michigan
Utility One Source

V

Valence Ventures
View Consulting, LLC
ViON Corporation
Vivanda
Vodafone Germany

W

Walmart
Wells Fargo & Company
Westnet Incorporated
White & Case LLP
Wolters Kluwer ELM Solutions

X

Xerox
XPO Logistics, Inc.

Y

Yale University
Y-Apply, Inc.
YAXA
Yoi Corporation

Z

ZH Healthcare
Zuora Inc.

GCA EXECUTIVE MEMBERS COME FROM THESE 405 ACADEMIC INSTITUTIONS

A

Adelphi University
 American Public University System
 American University
 American University Washington College of Law
 Amherst College
 Amos Tuck School of Business at Dartmouth
 Arizona State University
 Auburn University
 Australian Graduate School of Management
 Azusa Pacific University

B

Baldwin Wallace College
 Bangalore University
 Barry University
 Bates College
 Baylor University
 Bentley University
 Birla Institute of Technology and Science, Pilani
 Boston College
 Boston University
 Brandeis University
 Brazilian Air Force Institute of Technology
 Brigham Young University
 Brooklyn College, CUNY
 Brown University
 Bryant University
 Bucknell University

C

California State University-Chico
 Canisius College
 Carl von Ossietzky Universität Oldenburg
 Carnegie Mellon University
 Central Michigan University
 Chatham University
 City University of New York
 City University, London
 Clarkson University
 Cleveland State University
 Colby College
 Colegio de Estudios Superiores de Administracion (C.E.S.A)
 Colgate University
 Columbia Business School
 Columbia Law School
 Columbia University
 Cornell University
 Coventry University
 Cranfield University

D

Danmarks Tekniske Universitet
 Dartmouth College
 Davis and Elkins College
 Deakin University, Australia
 Delhi University
 Demontfort University
 DePaul University - Charles H. Kellstadt
 Graduate School of Business
 Depauw University
 DeVry University
 Dickinson College
 Drexel University
 Dublin Institute of Technology
 Duke University

E

East Tennessee State University
 Eastern Kentucky University
 Eastern New Mexico University
 Ecole nationale des Ponts et Chaussées
 Ekonomická univerzita v Bratislave
 ESADE Business & Law School

F

Fairfield University
 Ferris State University
 Florida Atlantic University
 Florida Atlantic University
 Florida International University
 Florida State University
 Fordham Gabelli School of Business
 Fordham University School of Law
 Fordham University, Graduate School of Business Administration
 Franklin & Marshall College
 Fresno State
 Fundação Getulio Vargas

G

Geneva College
 George Mason University
 George Washington University School of Business and Public Management
 Georgetown University
 Georgetown University - The McDonough School of Business
 Georgia Institute of Technology
 Georgia State University
 Gettysburg College
 GMI Engineering & Management Institute
 Goizueta Business School, Emory University

Grinnell College
 Gujarat University

H

Hamburg University of Economics and Politics
 Hanze Hogeschool Groningen
 Hartwick College
 Harvard Business School
 Harvard Kennedy School
 Harvard Law School
 Harvard University
 Hobart College
 Hofstra University
 Howard University

I

"IAE Business School"
 IESE Business School - University of Navarra
 Imperial College – London
 Indian Institute of Management
 Indian Institute of Technology
 Indiana University
 Indiana University Robert H. McKinney School of Law
 Institute of Chartered Accountants in England and Wales, (Fellow)
 Instituto Tecnológico Autónomo de México (ITAM)
 Instituto Tecnológico de Aeronáutica - ITA
 Iona College
 Iowa State University
 Istituto Tecnico Nautico di Savona

J

James Madison University

K

Kettering University
 Kiev National University
 King's College
 Kutztown University of Pennsylvania

L

Lafayette College
 Lancaster University
 LaRoche College
 Leiden University
 Liceo Classico "Melchiorre Gioia"
 London Business School

Louisiana State University
 Loyola College in Maryland
 Loyola University Chicago

M

Manchester Polytechnic
 Mangalore University
 Manhattan College
 Marist College
 McGill University
 Melbourne University
 Mercy College
 Michigan State
 Michigan State University
 Middle East Technical University
 Middlebury College
 Middlesex County College
 Milan State University
 Mississippi State University
 Missouri State University
 MIT
 MIT Sloan
 Molloy College
 Montclair State College
 Montclair State University
 Montpellier & Toulouse Universities
 Morningside College

N

National Defense University
 National Institute of Technology
 National War College
 Naval Postgraduate School
 Naval War College
 New York University
 New York University – Leonard N. Stern School of Business
 North Carolina State University
 Northeastern University
 Northern Kentucky University
 Northwestern University
 Northwestern University Kellogg School of Management
 Nottingham University
 Nova Southeastern University

O

Oakland University
 Obafemi Awolowo University
 Oberlin College
 Oklahoma City University
 Old Dominion University
 Osmania University

P

Pace University
 Panjab University
 Peace Theological Seminary & College of Philosophy
 Pennsylvania State University, The
 Politecnico di Milano
 Politecnico di Torino
 Polytechnic Institute of New York
 Pontifical Catholic University of Puerto Rico
 Pontifical Catholic University of Rio de Janeiro
 Pontificia Universidad Católica Madre y Maestra, Santo Domingo, Dominican Republic
 Pratt Institute
 Princeton University
 Purdue University

Stanford University
 Stanford University Graduate School of Business
 State University College of Arts and Science Potsdam
 State University Management, Russia
 State University of New York
 State University of New York at Albany
 State University of New York at Binghamton
 State University of New York College at Plattsburgh
 State University of New York College at Potsdam
 State University of New York, Buffalo
 Stevens Institute of Technology
 Stony Brook University
 Suffolk University Law School
 Syracuse University
 Syracuse University – S.I Newhouse School of Public Communications

Università degli Studi di Udine
 Université de Marne-la-Vallée
 Université Paris Dauphine
 Universiti Teknologi Malaysia
 University College Cork
 University ITMO, St. Petersburg, Russia
 University of Alabama at Birmingham
 University of Alabama
 University of Amsterdam
 University of Arizona
 University of Arkansas at Fayetteville
 University of Birmingham
 University of Buenos Aires
 University of Buffalo
 University of California, Berkely
 University of California Berkley
 University of California, Davis
 University of California, Riverside
 University of California, San Diego
 University of California, Santa Barbara
 University of Cambridge
 University of Canberra
 University of Central Oklahoma
 University of Chicago
 University of Chicago Booth School of Business, The
 University of Colorado
 University of Connecticut
 University of Connecticut School of Law, The
 University of Dallas
 University of Dayton
 University of Denver
 University of Edinburgh, The
 University of Florida
 University of Genova
 University of Houston
 University of Illinois at Chicago
 University of Illinois at Urbana Champaign
 University of Iowa
 University of Kansas
 University of Liverpool
 University of London
 University of Louisville
 University of Maryland
 University of Maryland – Robert H. Smith School of Business
 University of Massachusetts
 University of Michigan, The
 University of Nevada Las Vegas Lee Business School
 University of New Haven
 University of New Orleans
 University of Newcastle upon Tyne
 University of North Carolina at Chapel Hill
 University of North Carolina at Chapel Hill Kenan-Flagler Business School, (MBA)
 University of Notre Dame – Mendoza College of Business
 University of Nottingham
 University of Oxford

University of Pennsylvania, The Wharton School
 University of Pennsylvania
 University of Phoenix
 University of Pittsburgh
 University of Pittsburgh – Joseph M. Katz Graduate School of Business
 University of Poitiers
 University of Pretoria (South Africa), Gordon Institute of Business Science
 University of Puerto Rico
 University of Puerto Rico, School of Engineering
 University of Puget Sound
 University of Pune
 University of Queensland, Australia
 University of Rhode Island
 University of Rochester
 University of Rooster
 University of Saint Thomas
 University of Sao Paulo, Law
 University of Saskatchewan
 University of Scranton
 University of South Africa (Pretoria)
 University of Southern California
 University of Tennessee-Knoxville
 University of Texas at Austin, The
 University of Texas at Austin, The Red McCombs School of Business

Q

Queens College
 Queens University
 Queensland University of Technology

R

Ramapo College
 Reading University
 Reed College
 Regis University
 Rensselaer Polytechnic Institute
 Rhodes College
 Robert Morris University
 Rochester Institute of Technology
 Roger Williams University
 Rose-Hulman Institute of Technology
 Rutgers University

T
 Technical University of Rheinland-Pfalz, Germany
 Technische Universität Wien
 Texas A&M University
 Texas Christian University
 Texas Christian University
 Thunderbird American Graduate School
 Trevecca Nazarene College
 Trinity College
 Trinity University
 Tufts University
 Tufts University – The Fletcher School of Law and Diplomacy
 Tulane University

U

UF Hough Graduate School of Business
 U.S. Army War College
 U.S. Coast Guard Academy
 United States Military Academy at West Point
 United States Naval Academy
 Universidad Antonio de Nebrija, Madrid, Spain
 Universidad de Buenos Aires
 Universidad de Lima
 Universidad de Los Andes
 Universidad de Santiago de Compostela
 Universidad del CEMA
 Universidad Metropolitana
 Universidad Panamericana
 Universidad Politécnica de Madrid
 Universidad Simón Bolívar
 Universidade do Estado do Rio de Janeiro
 Universidade Federal de Minas Gerais
 Universidade Federal do Rio de Janeiro
 Università degli Studi di Napoli 'Federico II'

University of Colorado
 University of Connecticut
 University of Connecticut School of Law, The
 University of Dallas
 University of Dayton
 University of Denver
 University of Edinburgh, The
 University of Florida
 University of Genova
 University of Houston
 University of Illinois at Chicago
 University of Illinois at Urbana Champaign
 University of Iowa
 University of Kansas
 University of Liverpool
 University of London
 University of Louisville
 University of Maryland
 University of Maryland – Robert H. Smith School of Business
 University of Massachusetts
 University of Michigan, The
 University of Nevada Las Vegas Lee Business School
 University of New Haven
 University of New Orleans
 University of Newcastle upon Tyne
 University of North Carolina at Chapel Hill
 University of North Carolina at Chapel Hill Kenan-Flagler Business School, (MBA)
 University of Notre Dame – Mendoza College of Business
 University of Nottingham
 University of Oxford

University of the West Indies
 University of the Witwatersrand
 University of Toledo
 University of Toronto
 University of Vermont
 University of Virginia
 University of Virginia Darden School of Business
 University of Wales, Cardiff
 University of Washington
 University of Waterloo
 University of West Georgia
 University of Wisconsin-Madison
 University Visveswaraya College of Engineering
 UNSW Australia
 Upsala College
 Ursinus College
 US Army War College
 US Coast Guard Academy
 UTC Compiegne

S

Sacred Heart University
 Saint Lawrence University
 Saint Louis University
 Sam Houston State University
 San Diego State University
 Santa Clara University
 Sapienza Università di Roma
 School of Advanced Air and Space Studies
 Seattle University
 Skidmore College
 Slippery Rock University
 South Dakota State University
 Southampton University, UK
 Southern CT State University
 Southern Illinois University
 Southern Methodist University Dedman School of Law
 St. Xavier's College

V

Vanderbilt University
 Vassar College
 Vienna University of Economics
 Villanova University
 Virginia Commonwealth University
 Virginia Polytechnic Institute and State University
 Virginia Tech

Virginia Wesleyan College
Vrije Universiteit Brussel

W

Wake Forest University
Walsh College
Washington and Lee University
Washington State University
Washington University in St. Louis
Wayne State University
Weatherhead School of Management
at Case Western Reserve University
Webster University
Wellesley College
West Chester University
West Virginia University
Western Connecticut State University
& Pace University
Western New England College
Westminster College
Wichita State University
Widener University School of Law
Williams College
Wirtschaftsuniversität Wien
Wittenberg University

Y

Yale University
Yale University Law School



DISTRIBUTION OF ALL UNDERGRADUATE AND ADVANCED DEGREES

A VAST MAJORITY (82%) OF THE DEGREES AWARDED TO GCA'S EXECUTIVE MEMBERS ARE HIGHLY CONCENTRATED FROM 10% OF ALL 405 ACADEMIC INSTITUTIONS.

99%

GCA MEMBERS HAVE UNDERGRADUATE DEGREES

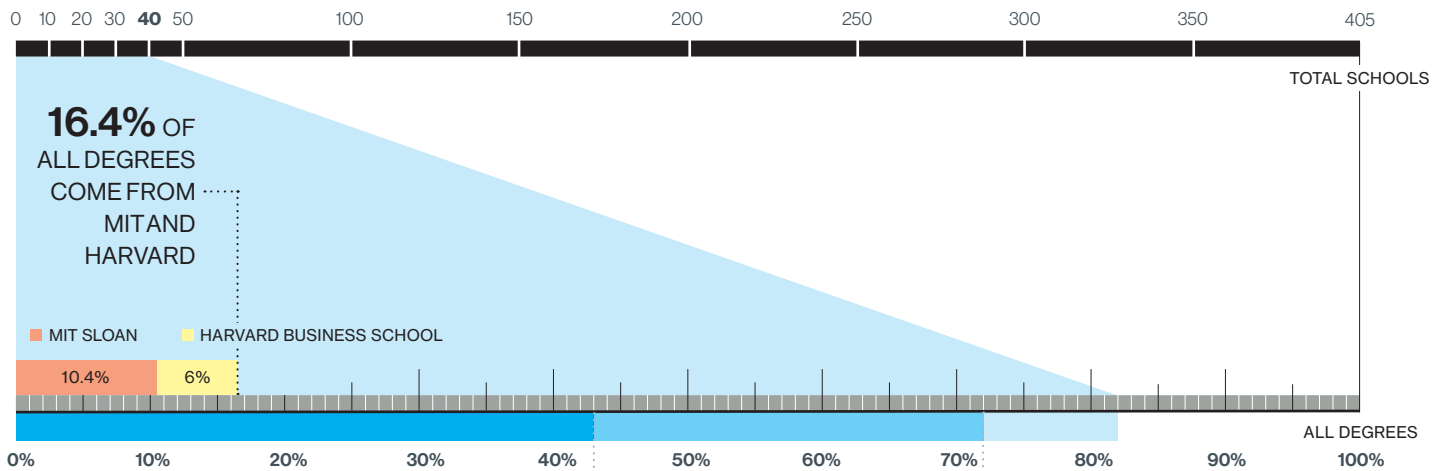
67%

HAVE AT LEAST ONE MASTERS DEGREE (OF WHICH 57% ARE MBAs)

8%

HAVE DOCTORAL DEGREES, WITH A COMBINATION OF PHD (57%) AND JD (43%)

NOTABLE HIGHLIGHTS FROM THE TOP 40 SCHOOLS



THE TOP 12 SCHOOLS COMMAND **43%** OF ALL DEGREES

MIT, Harvard University, Columbia University, Syracuse University, University of Michigan, New York University, United States Military Academy at West Point, State University of New York, University of Pennsylvania – The Wharton School, Cornell University, Rensselaer Polytechnic Institute, University of California

19 SCHOOLS COMMAND **29%** OF ALL DEGREES

Indian Institute of Technology, Stanford University, The University of Texas at Austin, University of Virginia, Boston University, Boston College, Northwestern University, Penn State University, University of North Carolina, Arizona State University, Brown University, Clarkson University, Duke University, Rutgers University, University of Colorado, University of Notre Dame, University of Southern California, Yale University

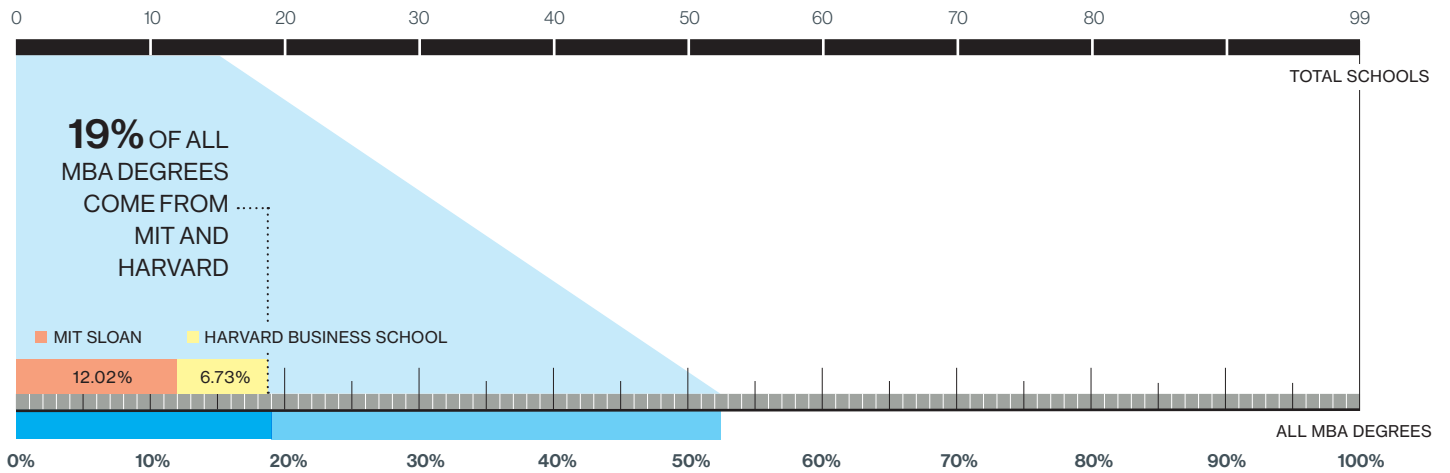
9 SCHOOLS COMMAND **10%** OF ALL DEGREES

Georgia Institute of Technology, Sapienza Università di Roma, The George Washington University, Tufts University, Universidad Simon Bolivar, University of Illinois, University of Maryland, University of Massachusetts, University of Miami

DISTRIBUTION OF MBA DEGREES OF GCA MEMBERS

MORE THAN 50% OF ALL MBA DEGREES COME FROM 15 BUSINESS SCHOOLS OUT OF A POOL OF 99

MIT SLOAN AND HARVARD BUSINESS SCHOOL COMMAND THE LION'S SHARE (19%) OF ALL MBA DEGREES



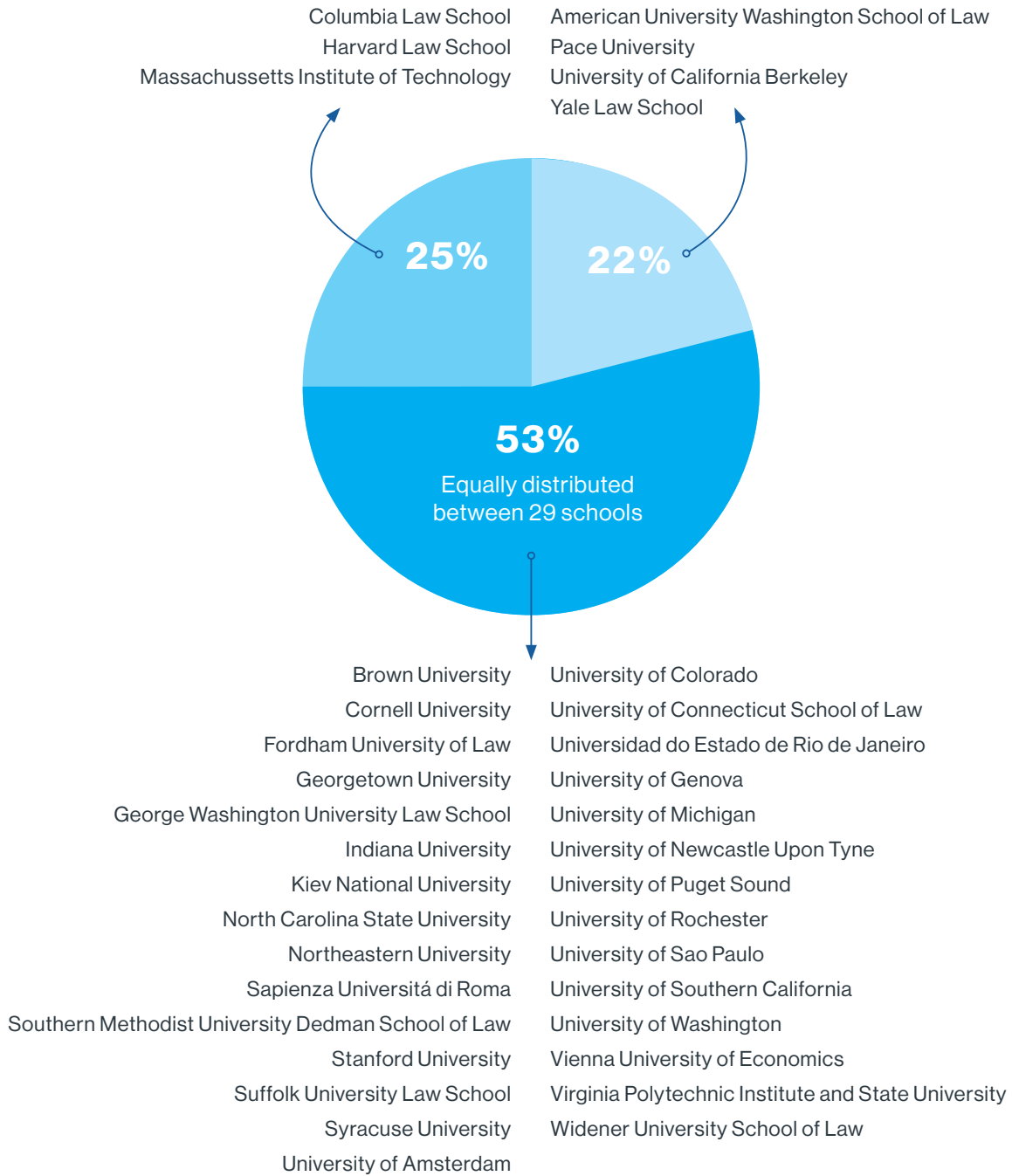
PERCENTAGE OF MBA DEGREES AT THE TOP 15 MBA SCHOOLS

MIT Sloan	12.02%
Harvard Business School	6.73%
New York University – Leonard Stern School of Business	4.33%
University of Pennsylvania, The Wharton School	4.33%
Columbia University – Columbia Business School	3.37%
The University of Chicago Booth School of Business	2.88%
Boston University – School of Management	2.40%
Georgetown University – The McDonough School of Business	2.40%
Northwestern University – Kellogg School of Management	2.40%
University of Michigan	2.40%
University of North Carolina at Chapel Hill – Kenan-Flager Business School, MBA	2.40%
Stanford University Graduate School of Business	1.92%
The University of Texas at Austin	1.92%
Boston College – Wallace E. Carroll Graduate School of Management	1.44%
University of Virginia Darden School of Business	1.44%
TOTAL	52.40%

DISTRIBUTION OF DOCTORAL DEGREES

8% OF GCA EXECUTIVE MEMBERS HAVE DOCTORAL DEGREES
FROM A TOTAL OF 36 SCHOOLS

REPRESENTATION OF DOCTORAL DEGREES BY SCHOOLS





43% OF ALL DOCTORAL DEGREES ARE JD (LAW) AND 57% OF ALL DOCTORAL DEGREES ARE COMPRISED OF MOSTLY SCIENTIFIC DISCIPLINES AND TO A LESSER EXTENT HUMANITIES DISCIPLINES

PERCENTAGE OF DOCTORAL DEGREES

